



**POT HOLDER AND DISHCLOTH
(TO CROCHET)**

MEASUREMENTS

Dishcloth

Approx 10 ins [25.5 cm] square.

Pot Holder

Approx 11 ins [28 cm] square.

MATERIALS

Lily® Sugar 'n Cream

(Solids: 70.9 g/2.5 oz/109 m/120 yds)

(Ombres: 56.7g/2 oz/86 m/95 yds)

GINGHAM DISHCLOTH

Main Color (MC)

(01740 Hot Pink) **1 ball**

Contrast A (00046 Rose Pink) **1 ball**

Contrast B (01004 Soft Ecru) **1 ball**

Contrast C (00144 Strawberry) **1 ball**

Contrast D (01712 Hot Green) **1 ball**

CROSS STITCH POT HOLDER

Main Color (MC)

(01004 Soft Ecru) **1 ball**

Contrast A (00046 Rose Pink) **1 ball**

Contrast B (01740 Hot Pink) **1 ball**

Contrast C (00084 Sage Green) **1 ball**

Contrast D (01712 Hot Green) **1 ball**

Size 4 mm (U.S. G or 6) crochet hook
or size needed to obtain gauge.

10 ins [25.5 cm] square of flame retardant lining and blunt ended tapestry needle for Pot Holder.

GAUGE

15 sc and 16 rows = 4 ins [10 cm].

STITCH GLOSSARY

Beg = Beginning.

Ch = Chain(s).

Dc = Double crochet.

Rep = Repeat.

RS = Right side.

Sc = Single crochet.

Sl st = Slip stitch.

Sp(s) = Space(s).

St(s) = Stitch(es).

Tog = Together.

WS = Wrong side.

Yoh = Yarn over hook.

INSTRUCTIONS

GINGHAM DISHCLOTH

Note: To change colors, work to last 2 loops on hook of last st. Yoh with new color and complete st. When working with 2 colors within a row, lay unused color along previous row and work over unused color.

With A, ch 37.

1st row: (RS). With A, 1 sc in 2nd ch from hook. 1 sc in each of next 3 ch.

*With B, 1 sc in each of next 4 ch. With A, 1 sc in each of next 4 ch. Rep from * to end of ch. 36 sc. Turn.

2nd row: With A, ch 1. 1 sc in each of first 4 sc. *With B, 1 sc in each of

next 4 sc. With A, 1 sc in each of next 4 sc. Rep from * to end of row. Turn.

3rd and 4th rows: As 2nd row, joining MC at end of last row.

5th row: With MC, ch 1. 1 sc in each of first 4 sc. *With A, 1 sc in each of next 4 sc. With MC, 1 sc in each of next 4 sc. Rep from * to end of row. Turn.

6th to 8th rows: As 5th row, joining A at end of last row.

9th row: As 2nd row.

Rep 2nd to 9th rows 3 times more, then 2nd to 8th rows once. Fasten off.

Edging: Join MC with sl st in bottom right corner. Ch 1. 3 sc in same sp. Work sc evenly up side of Dish Cloth to next corner. (2 sc. Ch 9 for hanging loop. Sl st back into last sc. 1 sc) all in next corner. Work sc evenly around rem of Dish Cloth, working 3 sc in each corner. Join with sl st to first sc. Fasten off.

Rose

With C, ch 11.

1st row: 3 dc in 4th ch from hook (counts as 4 dc). 4 dc in each ch to end of ch. Fasten off. Coil foundation row into rose shape and sew through all thicknesses to secure.

Leaves (make 2): With D, ch 5.

1st rnd: 1 sc in 2nd ch from hook. 1 hdc in next ch. 1 dc in next ch. 5 dc in last ch. Working into opposite side of ch into rem loops, 1 dc in next ch. 1 hdc in next ch. 1 sc in last ch. Join with sl st to first sc. Fasten off.

Sew Rose and Leaves in position as shown in picture.

**CROSS STITCH POT HOLDER
FRONT**

With MC, ch 41.

1st row: (RS). 1 sc in 2nd ch from hook. 1 sc in each ch to end of ch. 40 sc. Turn.

2nd row: Ch 1. 1 sc in each sc across. Turn.

Rep 2nd row 39 times more. Fasten off.

BACK

With A, work as for Front.

FINISHING

Using cross st, embroider Chart on Front.

Trim flame retardant lining to fit Back. With lining between pieces and WS facing each other, place Back and Front tog.

Edging: 1st rnd: Working through both thicknesses and with Front facing, join MC with sl st in bottom left corner. Ch 1. 3 sc in same sp. Work 1 rnd of sc evenly around outer edges to join pieces, working 3 sc in each corner. Join B with sl st to first sc. Break MC.

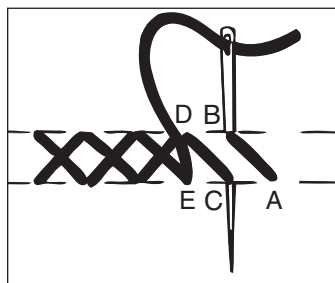
2nd rnd: With B, ch 1. Work 1 sc in each sc around working 3 sc in each corner sc. Join A with sl st to first sc. Break B.

3rd rnd: With A, ch 1. 1 sc in first sc. *Miss next sc. (1 dc. Ch 1. 1 dc) in next sc. Miss next sc. 1 sc in next sc. Rep from * around to last 3 sc. Miss next sc. (1 dc. Ch 1. 1 dc) in next sc. Miss last sc. Join with sl st to first sc.

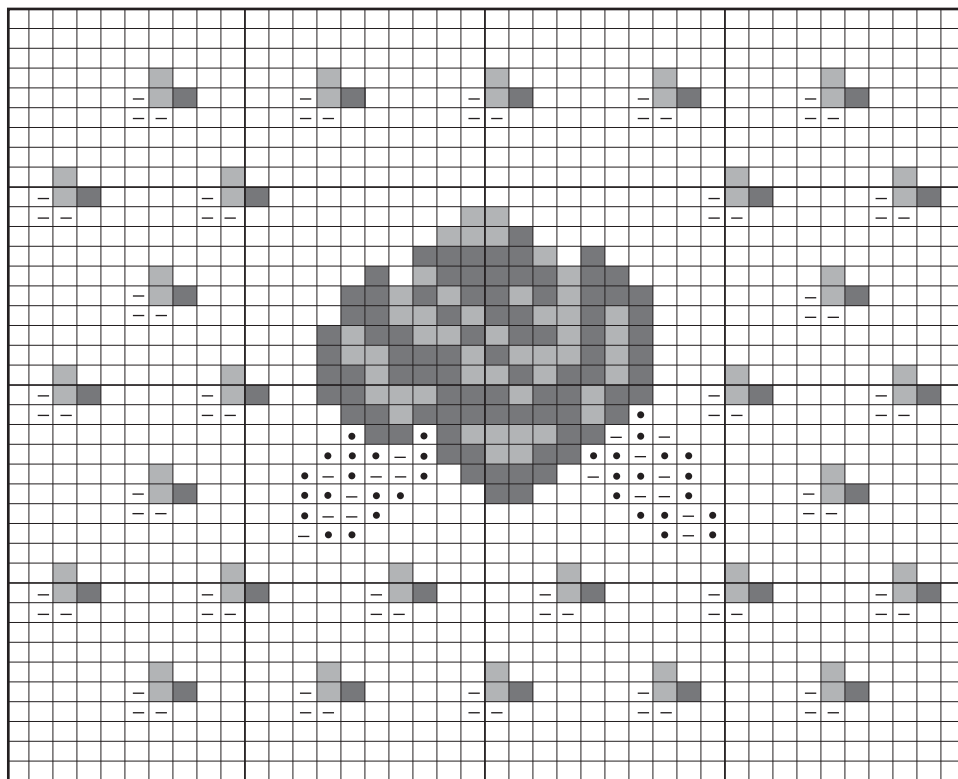
4th rnd: Ch 5 (counts as dc and ch 2). *1 sc in next ch-1 sp. Ch 2. 1 dc in next sc. Ch 2. Rep from * around working (1 sc. Ch 2. 1 dc. Ch 2. 1 sc) in each corner ch-1 sp. Join with sl st to 3rd ch of ch 5. Fasten off.

Loop: With Back facing, join B with sl st to 2nd rnd of Edging in top right corner. Ch 12. Join with sl st in same sp. Fasten off.

CROSS STITCH



CHART



KEY

□ = MC

■ = A

■ = B

◻ = C

◻ = D