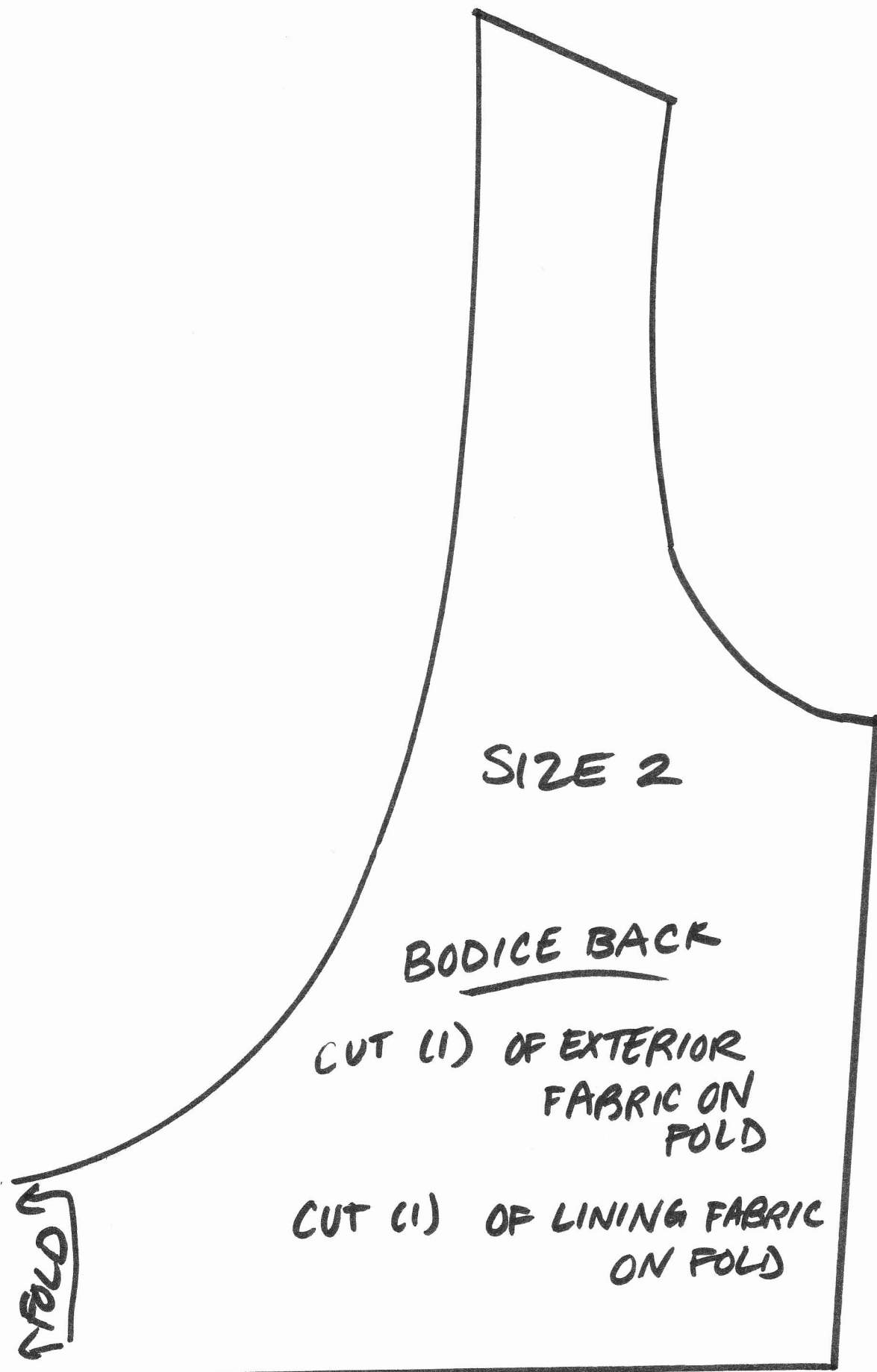


ME SEW CRAZY



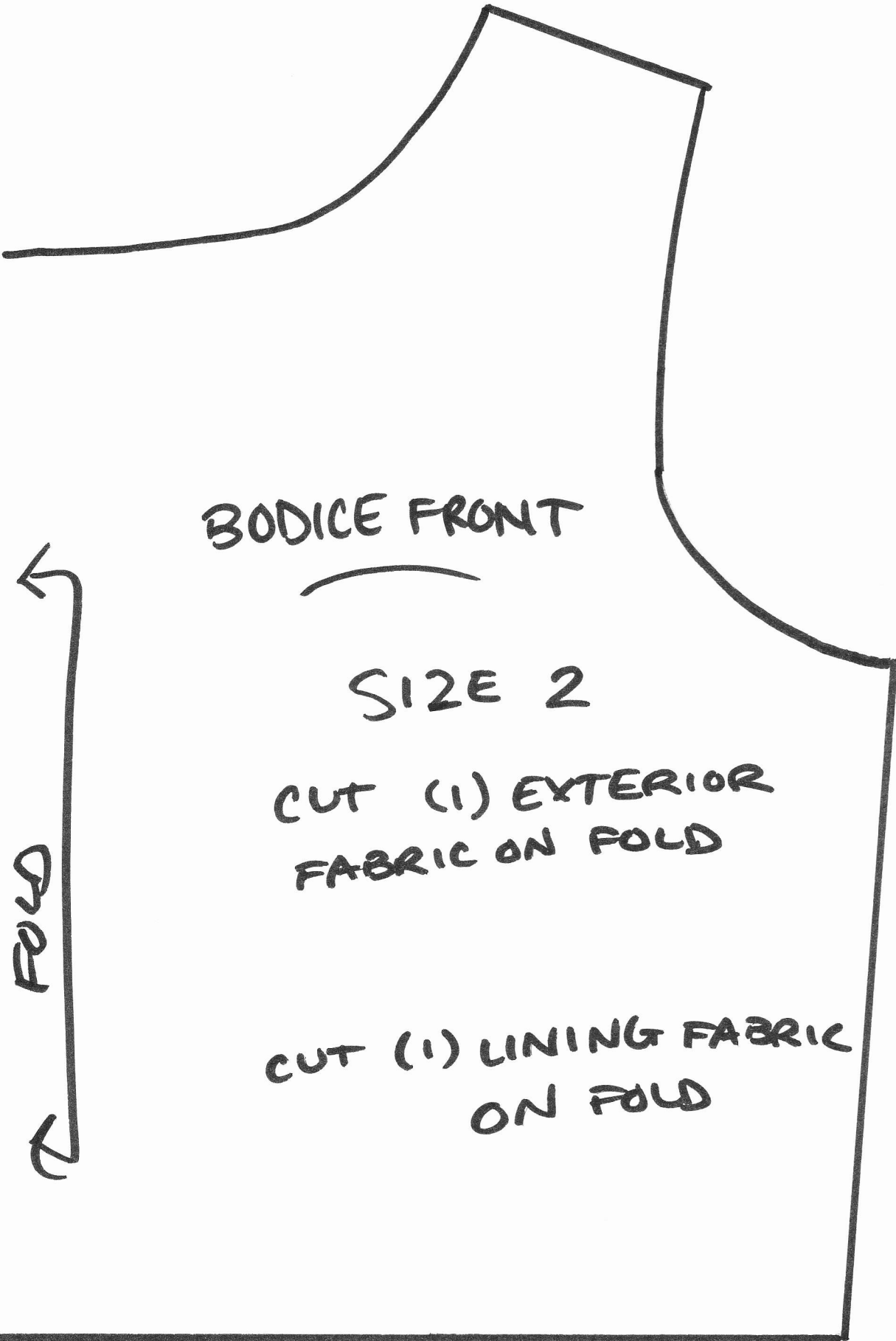
SIZE 2

BODICE BACK

CUT (1) OF EXTERIOR
FABRIC ON
FOLD

CUT (1) OF LINING FABRIC
ON FOLD

FOLD



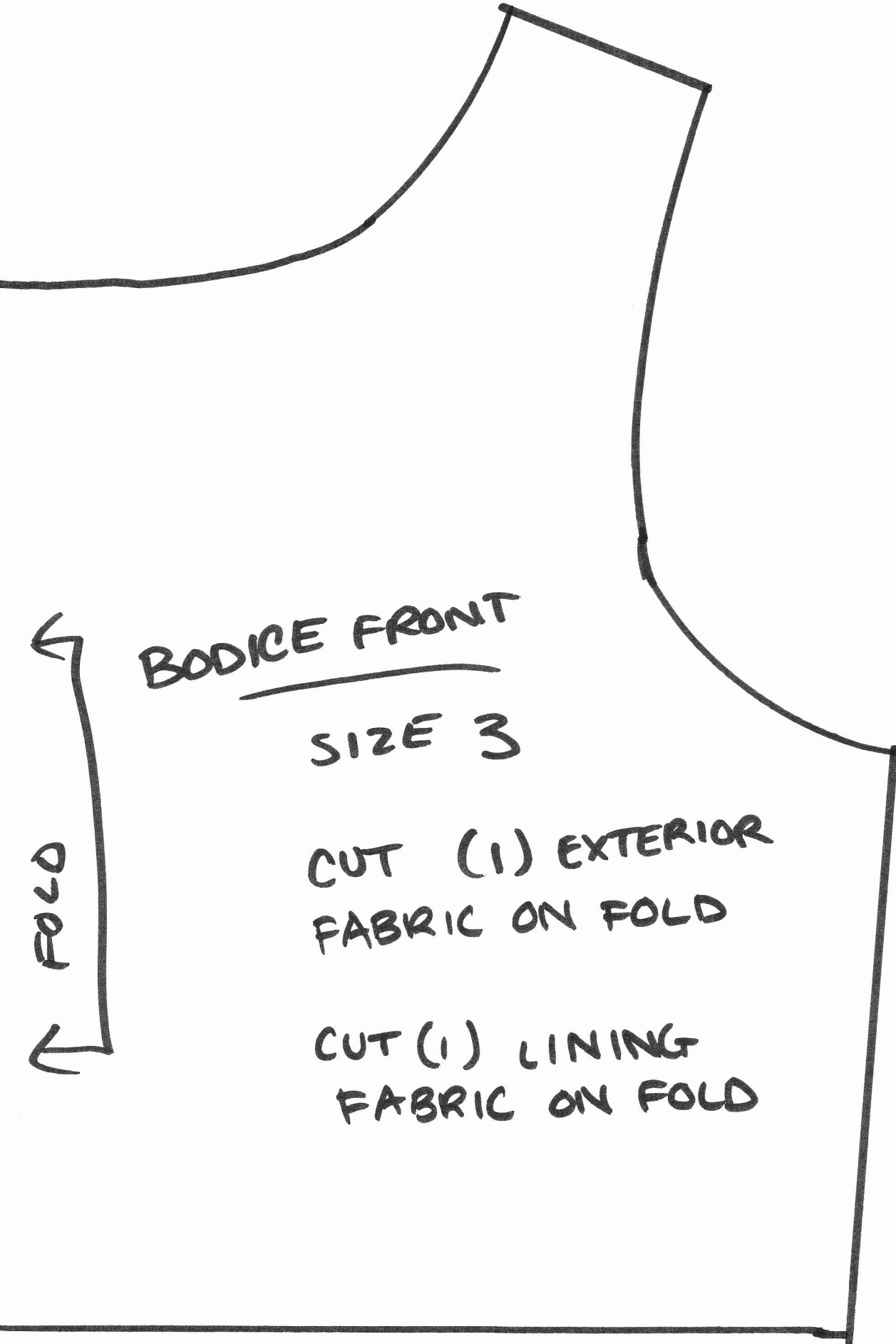
BODICE FRONT

SIZE 2

CUT (1) EXTERIOR
FABRIC ON FOLD

CUT (1) LINING FABRIC
ON FOLD

FOLD



BODICE FRONT

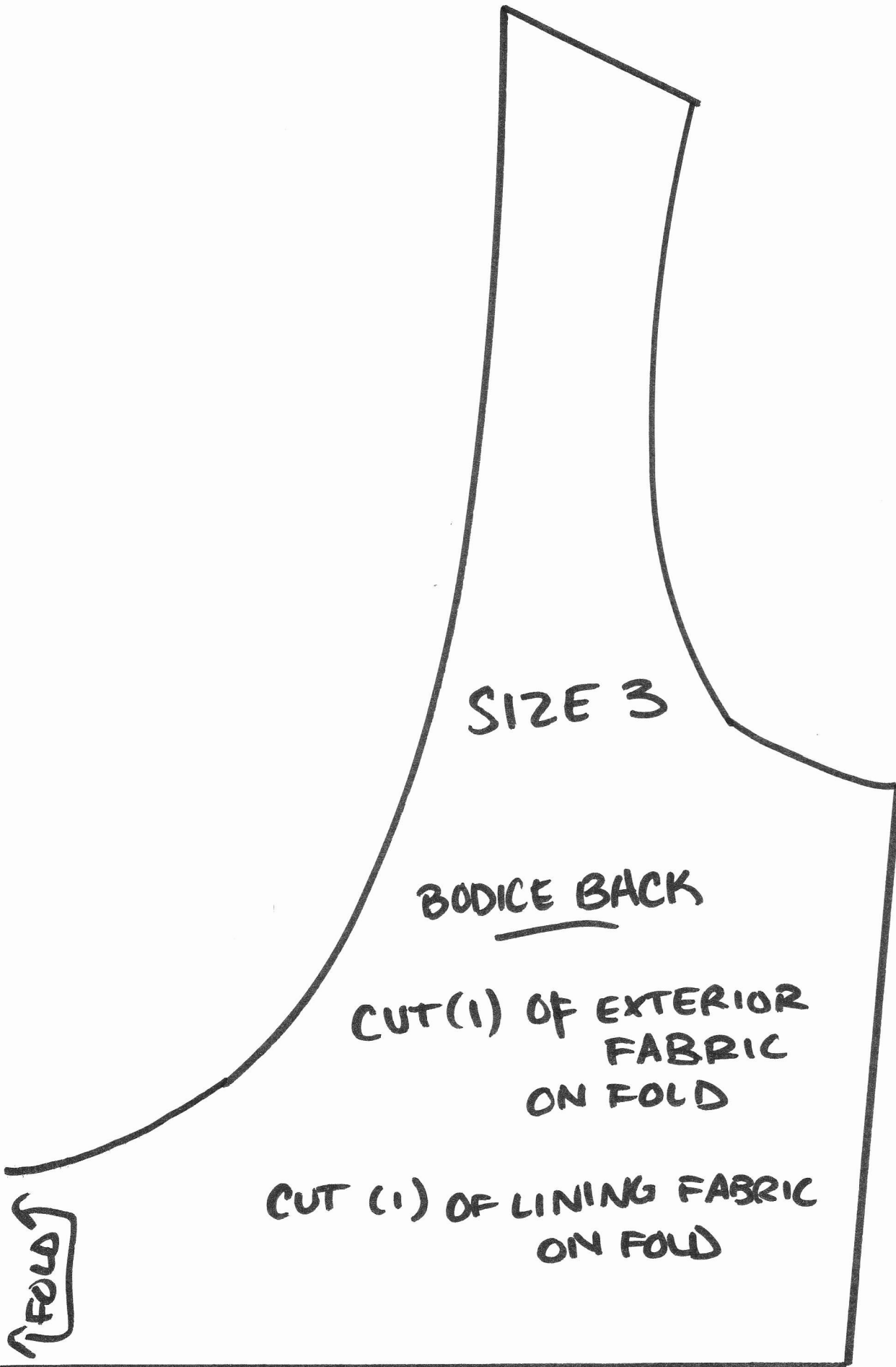
SIZE 3

CUT (1) EXTERIOR
FABRIC ON FOLD

CUT (1) LINING
FABRIC ON FOLD

FOLD

ME SEW CRAZY



SIZE 3

BODICE BACK

CUT (1) OF EXTERIOR
FABRIC
ON FOLD

CUT (1) OF LINING FABRIC
ON FOLD

FOLD

ME SEW CRAZY

BODICE FRONT
SIZE 4

CUT (1)
EXTERIOR
FABRIC ON
FOLD

CUT (1)
LINING
FABRIC ON
FOLD

← FOLD ←

ME SEW CRAZY

SIZE
4

BODICE BACK

CUT (1) OF
EXTERIOR FABRIC
ON FOLD

CUT (1) OF LINING
FABRIC
ON FOLD

FOLD

ME SEW CRAZY

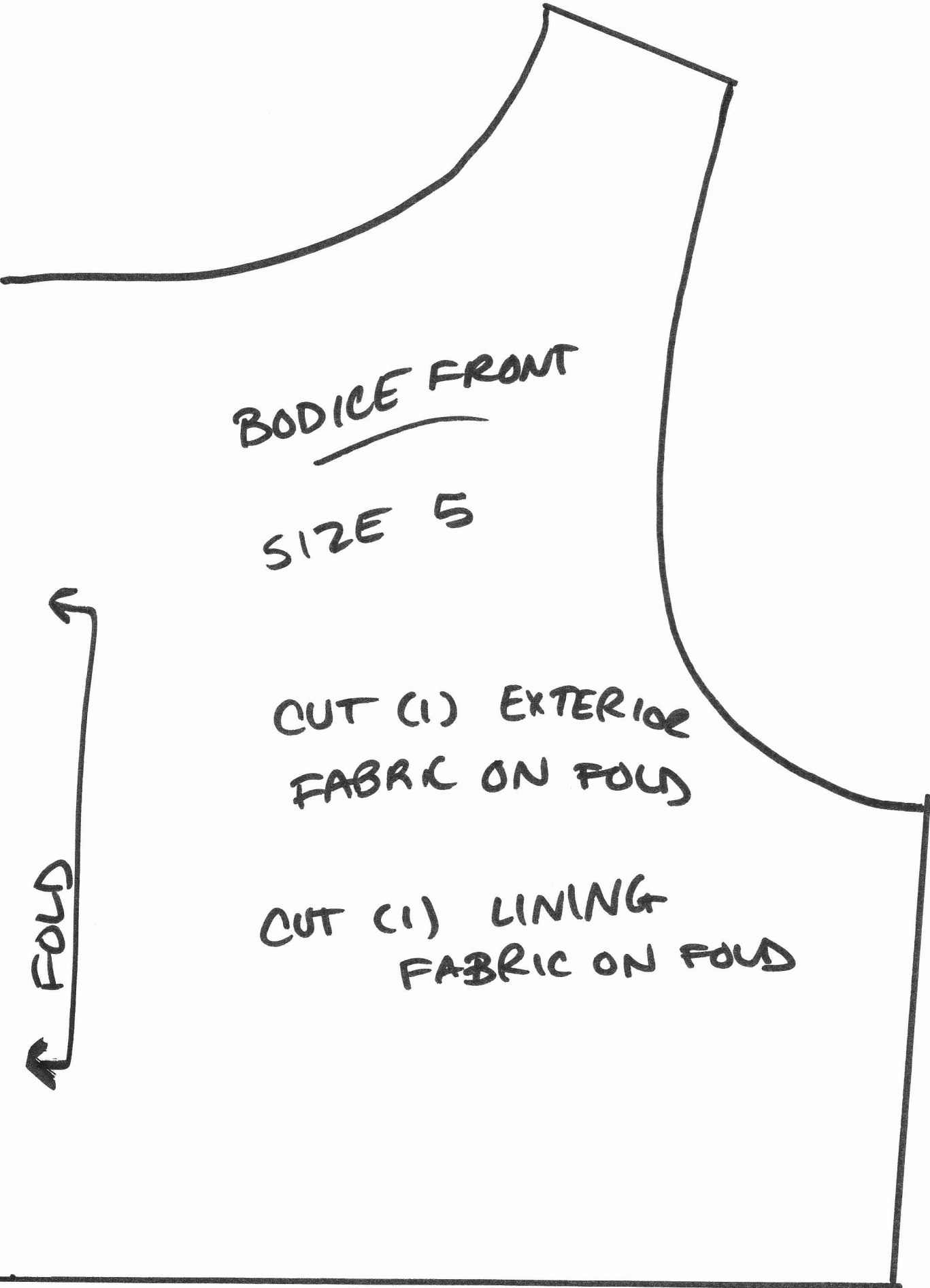
BODICE FRONT

SIZE 5

CUT (1) EXTERIOR
FABRIC ON FOLD

CUT (1) LINING
FABRIC ON FOLD

↑ FOLD ↑



ME SEW CRAZY

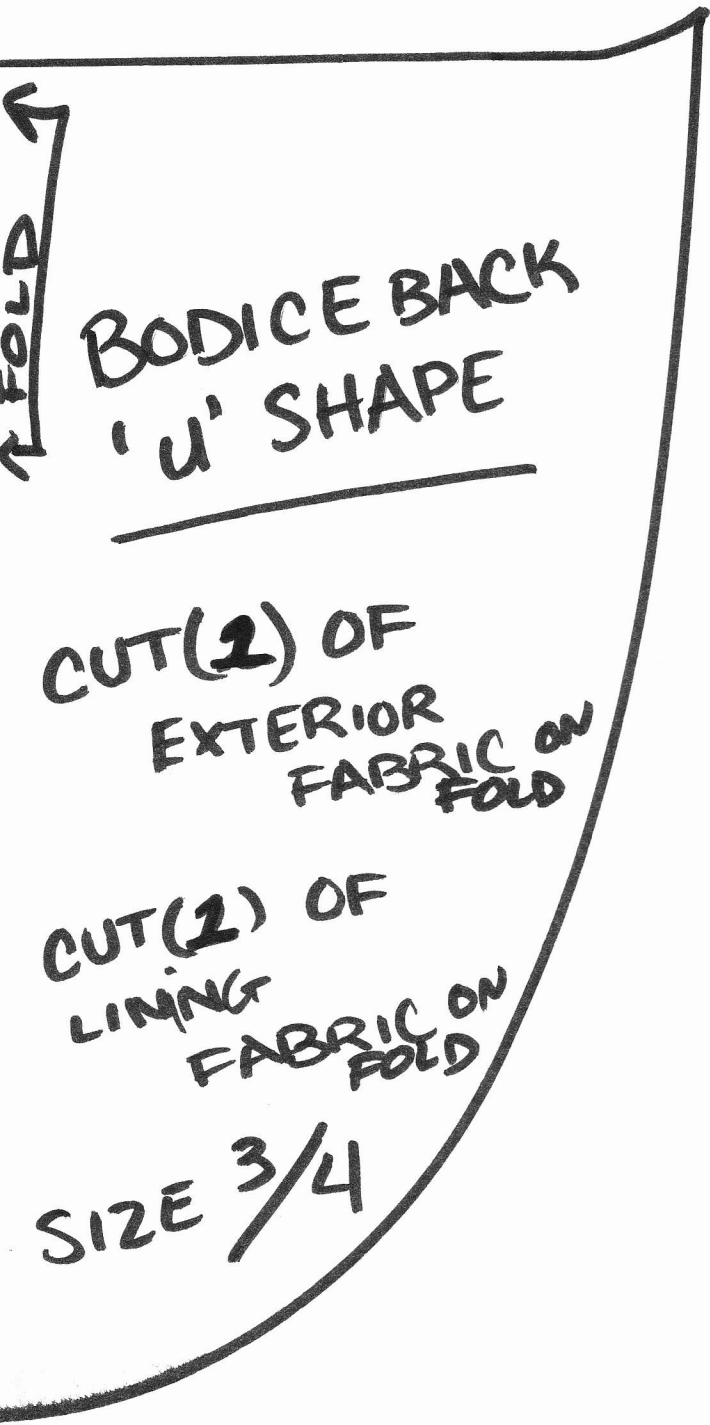
SIZE
5

BODICE BACK

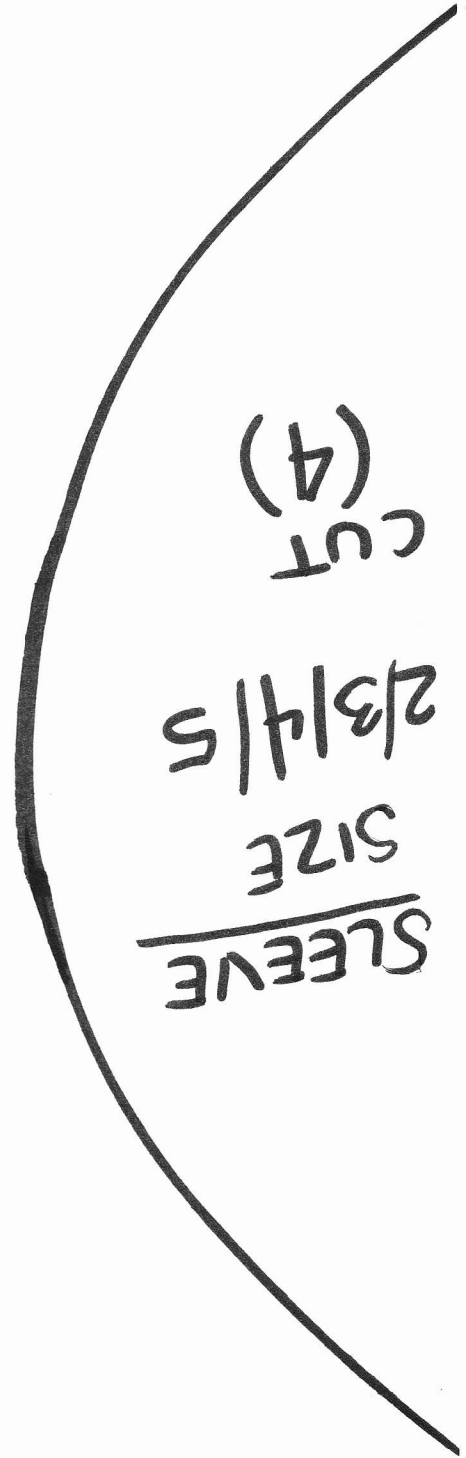
CUT (1) OF
EXTERIOR FABRIC ON
FOLD

CUT (1) OF LINING FABRIC
ON FOLD

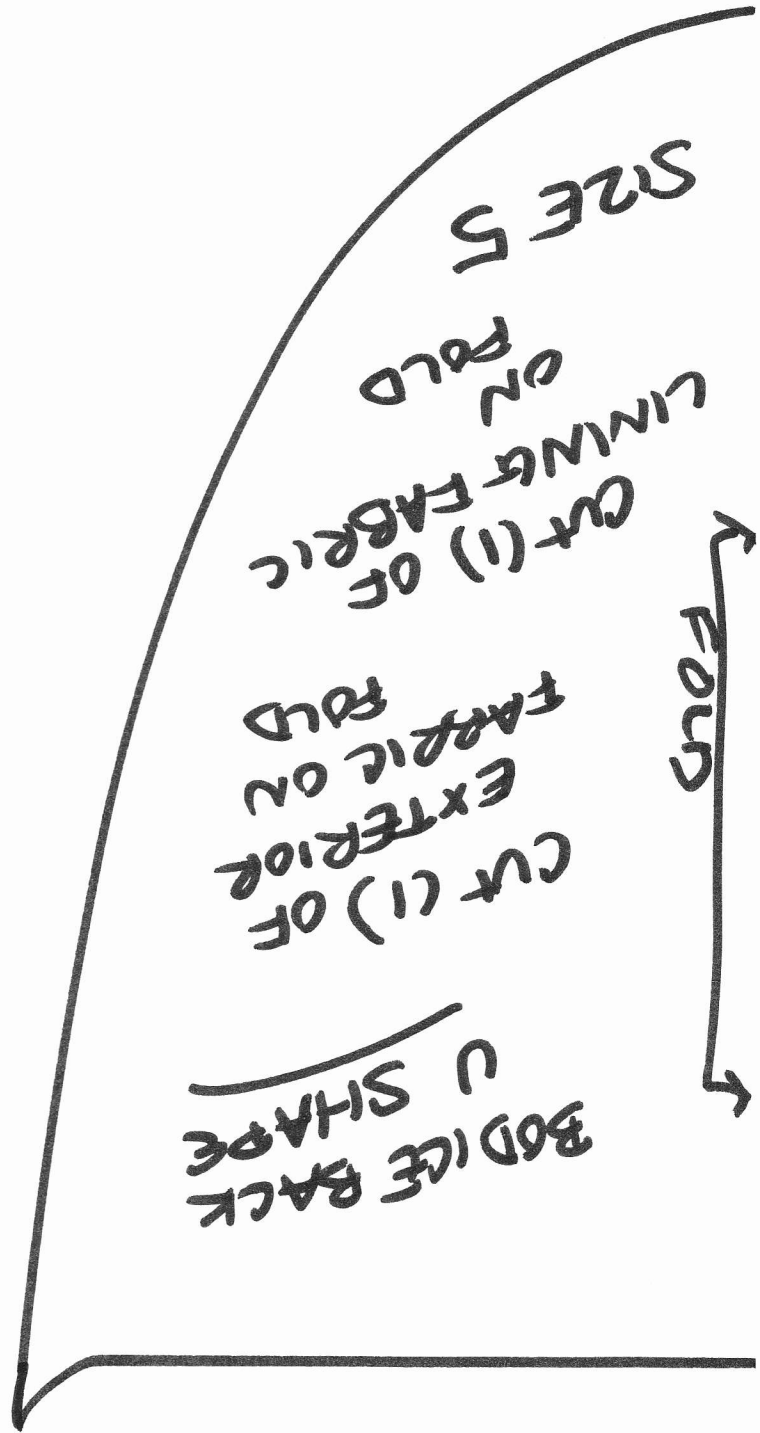
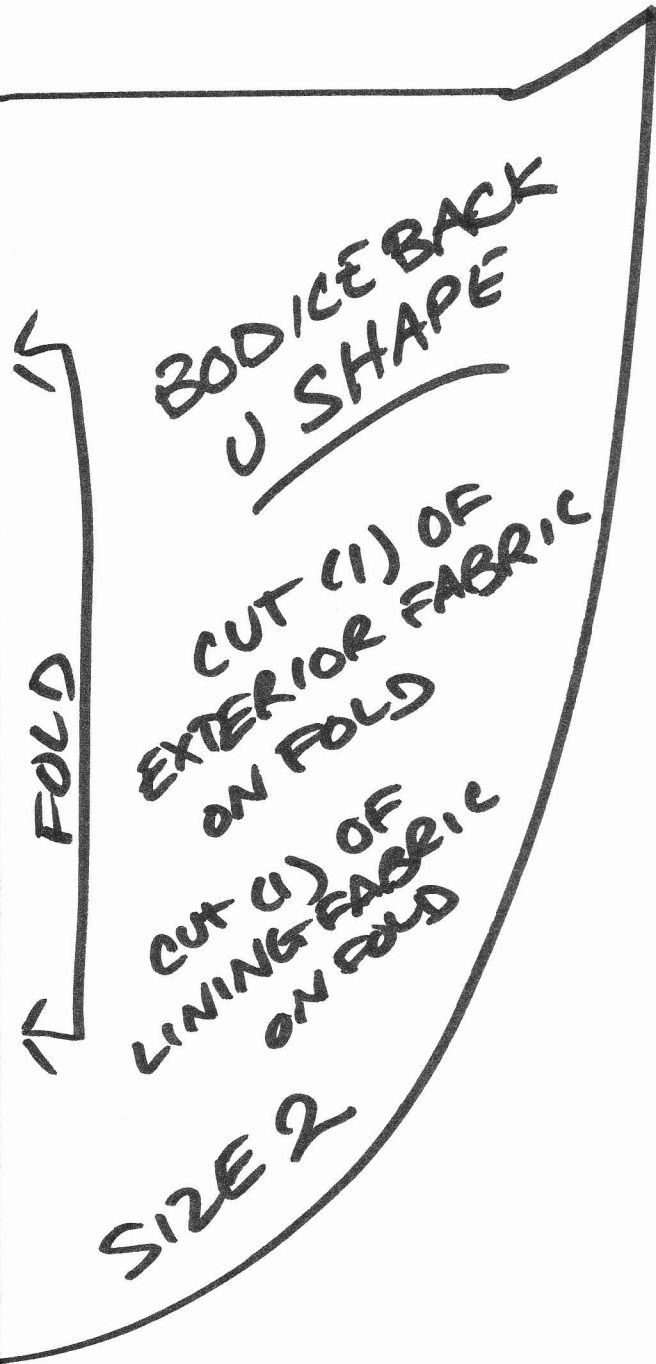




That says (1)



ME SEW CRAZY



ME SEW CRAZY