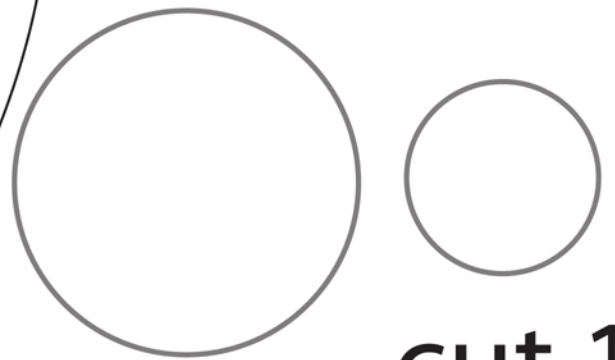
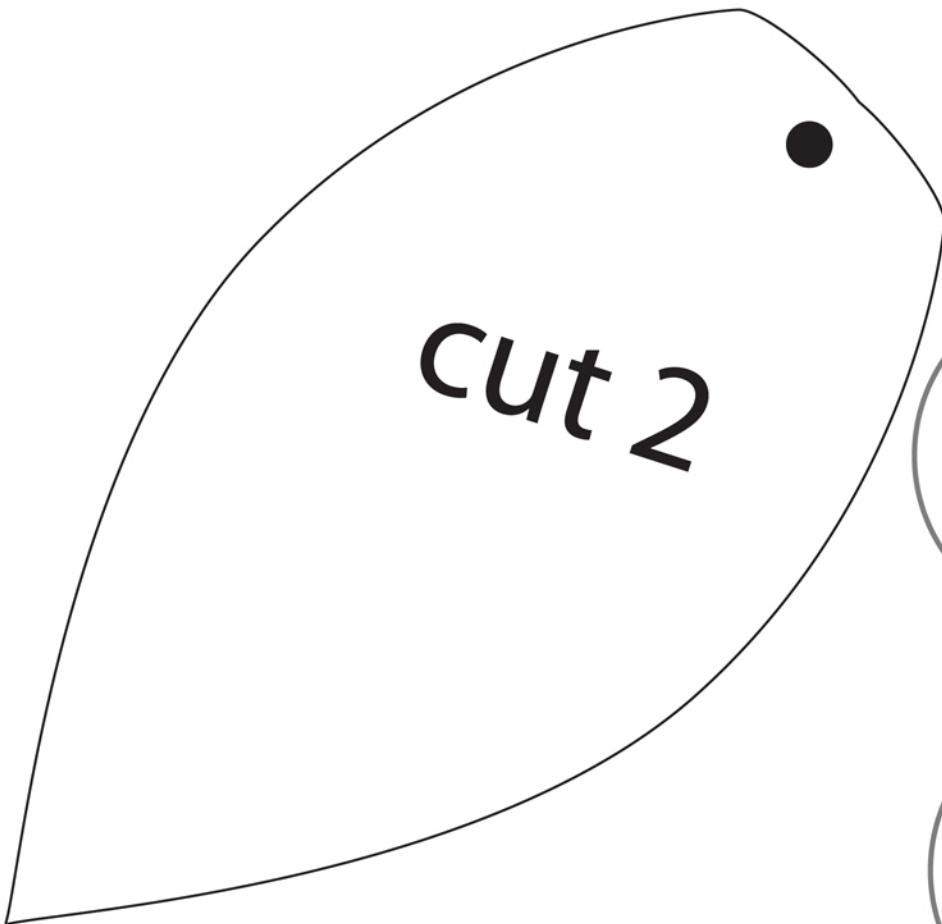
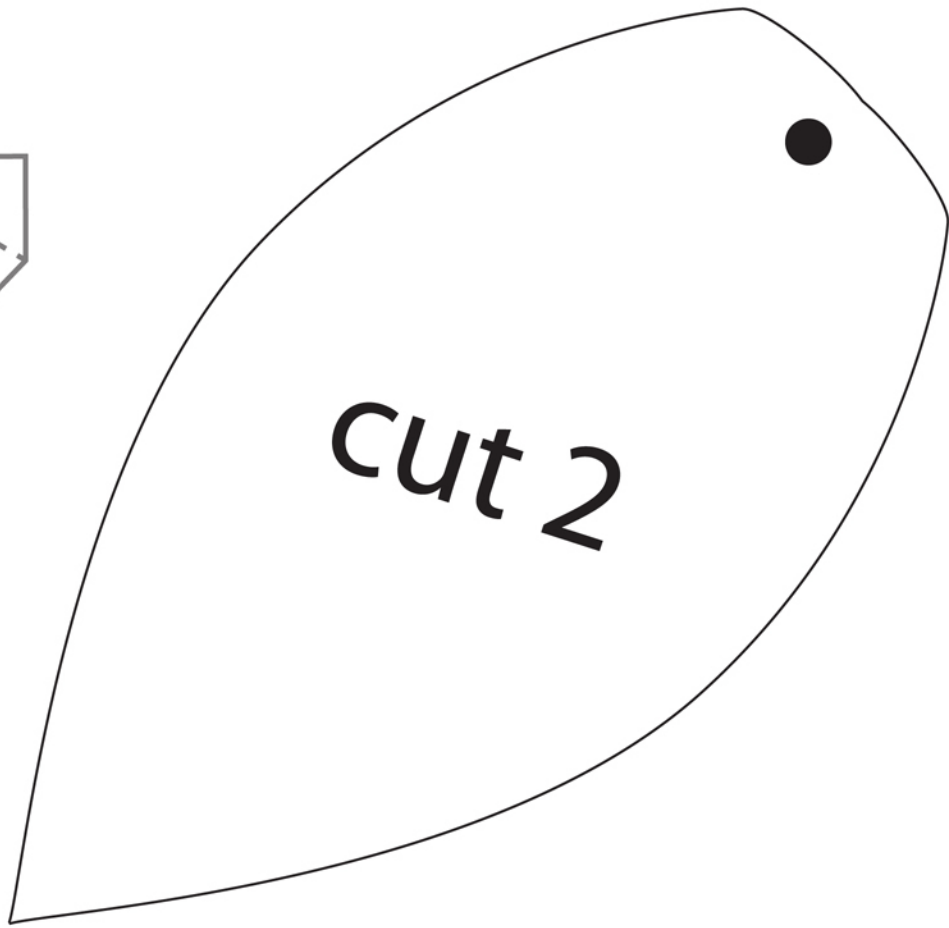
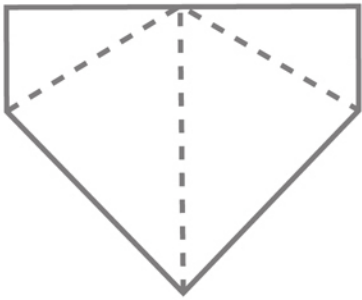
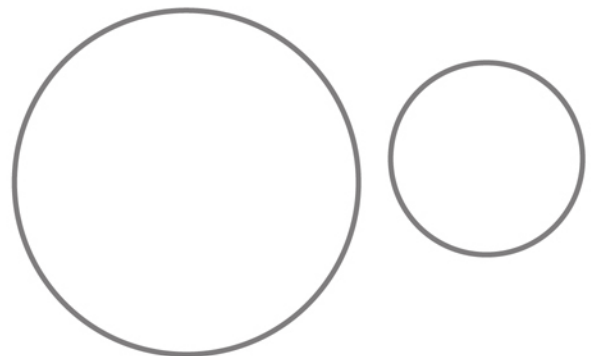


cut 1



cut 1



A large outline of an owl's head and body, intended to be cut out. The owl has two large, pointed ears at the top. Two solid black circles are placed on the owl's face, one on each side, representing eyes. A horizontal dashed line runs across the middle of the owl's face. A vertical dashed line runs down the center of the owl's body, from the horizontal line to the bottom. The text 'cut 2' is centered in the upper part of the owl's face.

cut 2

©Brenda Pinnick Designs, Inc.
For personal use only.

If you post your finished owl onto any internet forums, galleries or blogs, please give proper attribution and the following blog address as the source for this free, down-loadable pattern.

Please do not share on file sharing forums. Thank you. Have fun making your owls!

<http://brendapinnick.typepad.com>

Directions;

Use two different but coordinating pieces of 12" paper for owl's body and wings. Place them right sides together to draw and cut out. The back side of owl gets folded down on dashed line or cut if you wish. Fold the back section of the owl on the vertical line to create dimension so the owl will stand on it's own.

The wings can be glued together or sewn. Punch hole for brad as indicated by dots.

Turn owl pieces right side out and sew up the sides. (You could also glue them if you wish).

Punch out the holes for the brads .

Decorate the wings with embellishments or leave plain.

Attach wings using brads.

Cut beak out of a light colored paper scrap. Fold as indicated and glue onto owl's face.

Cut eyes out of scrap paper, glue onto owl's face.

***** Beware! These owls are addicting to make! *****

How to lay out your owl on to 12" x 12" papers

