

Patons®
Canadiana

Patons®
DECOR

Patons®
Classic Wool



CELESTIAL STOCKING

MEASUREMENTS

Length from top to heel:

14 ins [35.5 cm].

Foot length: 10 ins [25.5 cm].

TENSION

18 sts and 30 rows = 4 ins [10 cm]
in seed st pat.

MATERIALS

Patons Decor (100 g/3.5 oz) or
Patons Classic Wool (100 g/3.5 oz)
Patons Canadiana (100 g/3.5 oz)

Main Color MC (navy) **1 ball**
Contrast A (aran) **1 ball**
Contrast B (yellow) **1 ball**
Sizes 4.5 mm (U.S. 7) knitting
needles **or size needed to obtain
tension.**

INSTRUCTIONS

Note: When working from Chart I,
wind small balls of the colors to be
used, one for each separate area of
color in the design. Start new
colors at appropriate points. To
change colors, twist the two colors
around each other where they
meet, on WS, to avoid a hole.

When working from Chart II,
carry yarn not in use loosely across
WS of work but never over more
than 5 sts. When it must pass over
more than 5 sts, weave it over and
under color in use on next st or at
centre point of sts it passes over.
The colors are never twisted
around one another.

FRONT

With MC, cast on 6 sts.

Work Chart I to end of chart,
reading **RS** rows from **right** to left
and **WS** rows from **left** to right,
noting dashed outline for Front
shaping. **Do not cast off.**

****Next row:** (RS). Knit.

Beg with a knit row, work 3 rows
reverse stocking st.

Next row: (RS). Knit inc 11 sts
evenly across. 40 sts.

Next row: Purl.

Work Chart II in stocking st to end
of chart, reading **knit** rows from
right to left and **purl** rows from
left to right.

Next row: (WS). With MC, purl.

Next row: Knit, dec 11 sts evenly
across. 29 sts.

Next row: Purl.

Next 2 rows: Knit.

Next row: Purl.

Cast off knitways (WS).**

BACK

With MC cast on 6 sts. Work
Chart I to end of chart, reading **RS**
rows from **left** to right and **WS**
rows for **right** to left, noting black
outline for Back shaping. **Do not
cast off.** Work from ** to ** as
given for Front.

Pin pieces to measurements, cover
with a damp cloth and allow to
dry. Sew Front and Back tog.

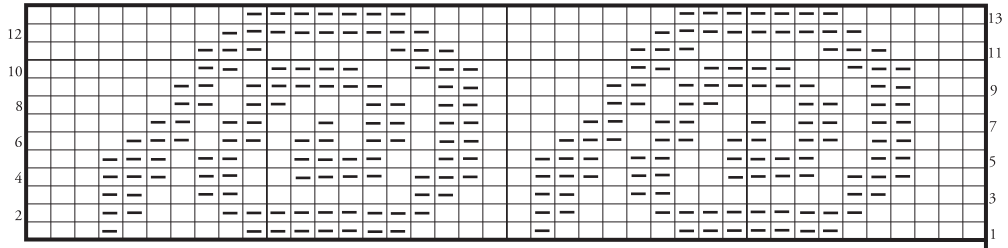
Loop

Twisted Cord: Cut 1 strand of yarn
10 ins [25 cm] long. Hold 1 end and
twist other end to the right until
strand begins to curl. Fold the 2 ends
tog and tie in a knot so it will not
unravel. The strands will now twist
themselves tog. Adjust length if desired.
Sew to stocking.



ABBREVIATIONS: www.patonsyarns.com/glossary

CHART II



Start Here

Key








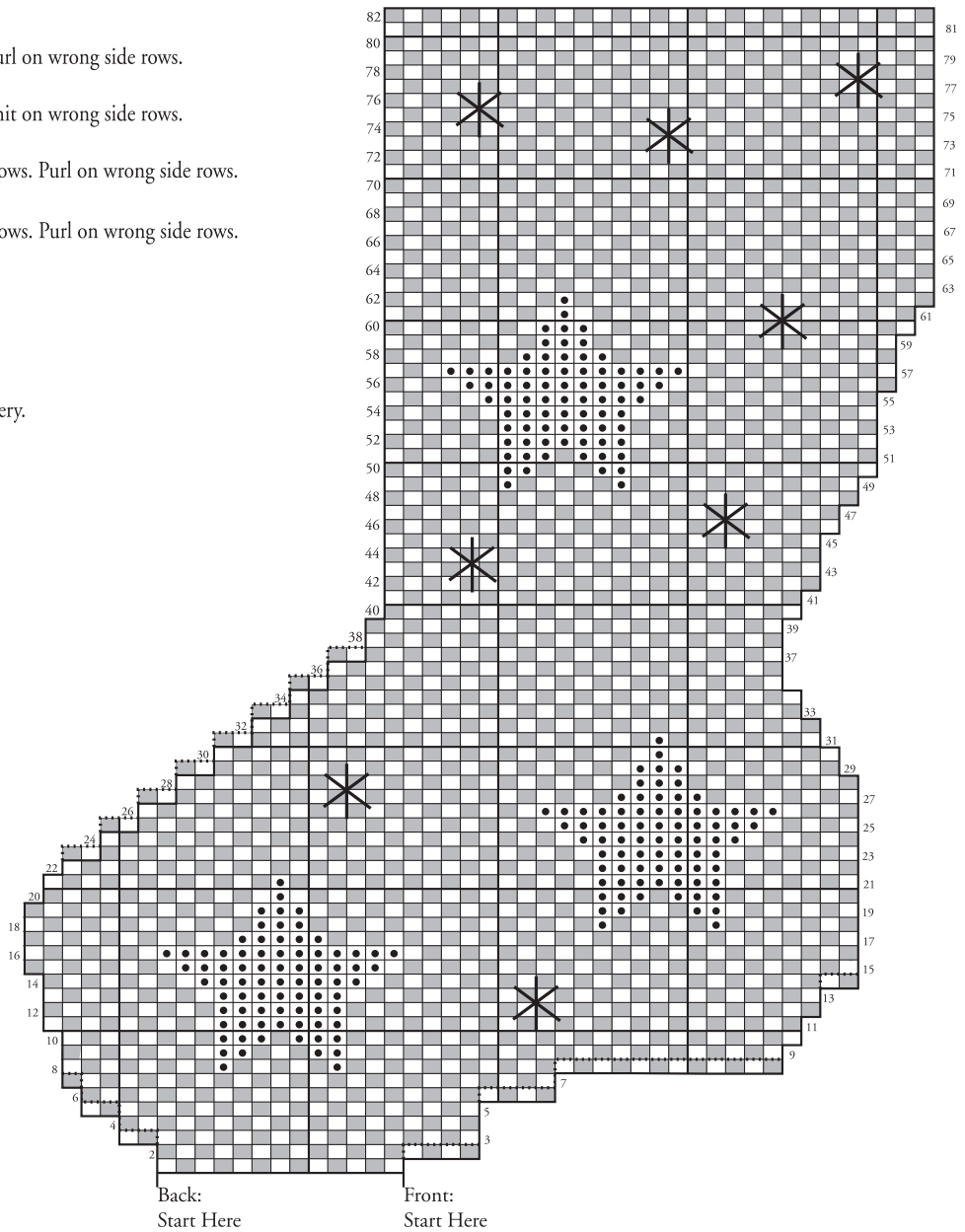
-  = MC. Knit on right side rows. Purl on wrong side rows.
-  = MC. Purl on right side rows. Knit on wrong side rows.
-  = Contrast A. Knit on right side rows. Purl on wrong side rows.
-  = Contrast B. Knit on right side rows. Purl on wrong side rows.
-  = Front outline only.
-  = Back and front outline.
-  = Contrast B. Straight st embroidery.

CHART I



Back:
Start Here

Front:
Start Here

 Patons®

... a part of your life.

P.O. Box 40, Listowel ON N4W 3H3