



FLORAL FANS

SIZES

Bust measurement

Small	30-32 ins [76-81 cm]
Medium	34-36 ins [86-91 cm]
Large	38-40 ins [97-102 cm]
Extra-Large	42-44 ins [107-112cm]

Finished bust

Small	42 ins [107 cm]
Medium	44 ins [112 cm]
Large	47½ ins [121 cm]
Extra-Large	49½ ins [126 cm]

TENSION

24 sts and 28 rows = 4 ins [10 cm]
with larger needles in Fair Isle pat.

MATERIALS

Patons Astra (50 g/1.75 oz)

Size S M L XL

Main Color (MC) (Dark Purple)

3 4 4 5 balls

Contrast A (Lilac)

1 2 2 2 ball(s)

Contrast B (Blue)

2 2 3 4 balls

Contrast C (Amethyst)

2 3 3 3 balls

Contrast D (White)

2 3 3 3 balls

Sizes 3.75 mm (U.S. 5) and 4 mm (U.S. 6) knitting needles **or size needed to obtain tension.** 2 st holders.

INSTRUCTIONS

The instructions are written for smallest size. If changes are necessary for larger sizes the instructions will be written thus ().

BACK

With MC and smaller needles cast on 111 (117-127-135) sts.

1st row: (RS). K1. *P1. K1. Rep from * to end of row.

This row forms seed st pat.

Cont in seed st pat for 1½ ins [4 cm] ending with RS facing for next row and inc 6 sts evenly across last row. 117 (123-133-139) sts.

Change to C, larger needles and work 3 (5-7-9) rows in stocking st.

Next row: (WS). P7 (13-13-9). *Inc 1 st in next st. P10 (10-11-12). Rep from * to end of row. 127 (133-143-149) sts.

Work Chart I to end of chart reading **knit rows from **right** to left and **purl** rows from **left** to right.

Next row: With MC, knit.

Next row: (WS). P7 (13-13-9). *P2tog. P10 (10-11-12). Rep from * to end of row. 117 (123-133-139) sts. Work 1 (3-5-7) row(s) in stocking st.

Next row: (WS). P7 (11-13-9). *Inc 1 st in next st. P10 (10-11-12). Rep from * to end of row. 127 (133-143-149) sts.

Work Chart II to end of chart reading **knit** rows from **right** to left and **purl** rows from **left** to right.

Next row: With C, knit.

Next row: (WS). With C, P7 (13-13-9). *P2tog. P10 (10-11-12). Rep from * to end of row. 117 (123-133-139) sts.

Work 1 (3-5-7) row(s) in stocking st.

Next row: (WS). P7 (13-13-9). *Inc 1 st in next st. P10 (10-11-12). Rep from * to end of row. 127 (133-143-149) sts.**

Rep from ** to ** once more.

Work Chart I to end of chart.

Next row: With MC, knit.

Next row: With MC, P7 (13-13-9). *P2tog. P10 (10-11-12). Rep from * to end of row. 117 (123-133-139) sts. With MC, work 2 (2-4-4) rows stocking st.



ABBREVIATIONS: www.patonsyarns.com/glossary

Patons

... a part of your life.

P.O. Box 40, Listowel ON N4W 3H3

Shoulder shaping: Cast off 12 (12-14-15) sts beg next 4 rows, then 11 (13-14-14) sts beg following 2 rows. Leave rem 47 (49-49-51) sts on a st holder.

FRONT

With MC and smaller needles cast on 111 (117-127-135) sts.

Work 1½ ins [4 cm] in seed st pat as given for Back ending with RS facing for next row and inc 6 sts evenly across last row. 117 (123-133-139) sts.

Change to C, larger needles and work 3 (5-7-9) rows in stocking st.

Next row: (WS). P7 (13-13-9). *Inc 1 st in next st. P10 (10-11-12). Rep from * to end of row. 127 (133-143-149) sts.

Rep from ** to ** as given for Back twice.

Neck shaping: Next row: Work Chart I across 56 (58-63-65) sts (neck edge).

Turn. Leave rem sts on a spare needle. Dec 1 st at neck edge on next 16 rows. 40 (42-47-49) sts. Work Chart I to end of chart.

Next row: With MC, knit, dec 5 sts evenly across. 35 (37-42-44) sts.

Work a further 3 (3-5-5) rows stocking st, ending with RS facing for next row.

Shoulder shaping: Cast off 12 (12-14-15) sts beg next and following alt row. Work 1 row even. Cast off rem 11 (13-14-14) sts.

With RS facing slip next 15 (17-17-19) sts onto st holder. Pat to end of row. Dec 1 st at neck edge on next 16 rows. 40 (42-47-49) sts.

Next row: With MC, knit, dec 5 sts evenly across. 35 (37-42-44) sts.

Work a further 4 (4-6-6) rows stocking st, ending with WS facing for next row.

Shoulder shaping: Cast off 12 (12-14-15) sts beg next and following alt row. Work 1 row even. Cast off rem 11 (13-14-14) sts.

SLEEVES

Stripe Pat

With C, work 14 (14-16-16) rows stocking st.

With B, work 4 rows stocking st.

With A, work 4 rows stocking st.

With MC, work 14 (14-16-16) rows stocking st.

With A, work 4 rows stocking st.

With B, work 4 rows stocking st.

These 44 (44-48-48) rows form stripe pat.

With MC and smaller needles cast on 53 (53-57-57) sts.

Work 1½ ins [4 cm] in seed st as given for Back ending with RS facing for next row.

Proceed in stripe pat **AT THE SAME TIME** inc 1 st each end of needle on 3rd and following 4th rows to 91 (95-103-103) sts, then every following 6th row to 105 (111-115-115) sts.

Cont even in stripe pat until work from beg measures 17¾ (18¼-18¾-19¼) ins [45 (46.5-47.5-49) cm] ending with RS facing for next row. Cast off.

FINISHING

Pin garment pieces to measurements. Cover with a damp cloth and leave to dry.

Neckband: Sew right shoulder seam. With RS of work facing, MC and smaller needles, pick up and knit 17 (17-19-19) sts down left front neck edge. K15 (17-17-19) from front st holder dec 2 sts evenly across. Pick up and knit 17 (17-19-19) sts up right front neck edge. K47 (49-49-51) from back st holder dec 1 st at center. 93 (97-101-105) sts.

Work 1½ ins [4 cm] in seed st pat as given for Back. Cast off in pat. Sew left shoulder and neckband seam.

Place markers on front and back side edges 9½ (10-10½-10½) ins [24 (25.5-26.5-26.5) cm] down from shoulder seams. Sew in sleeves between markers. Sew side and sleeve seams.

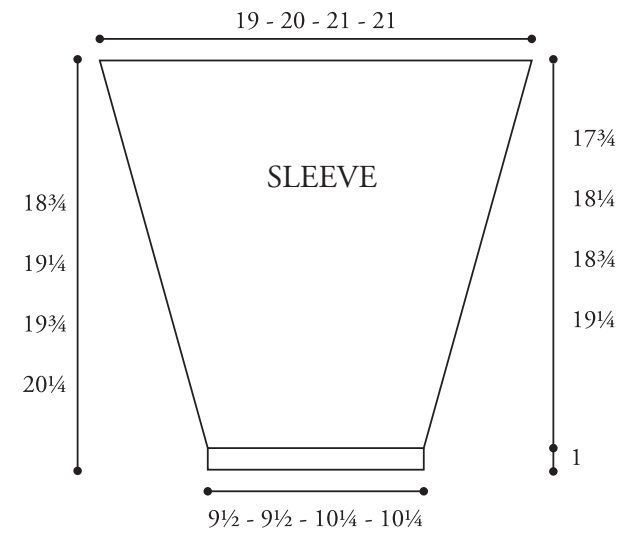
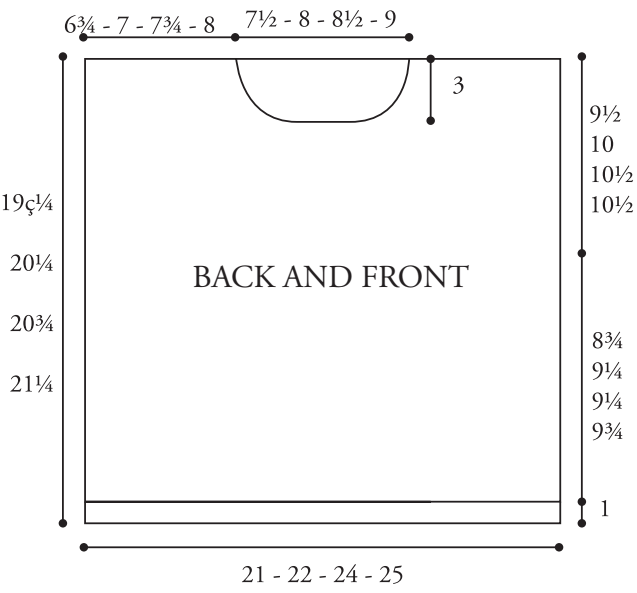


CHART I

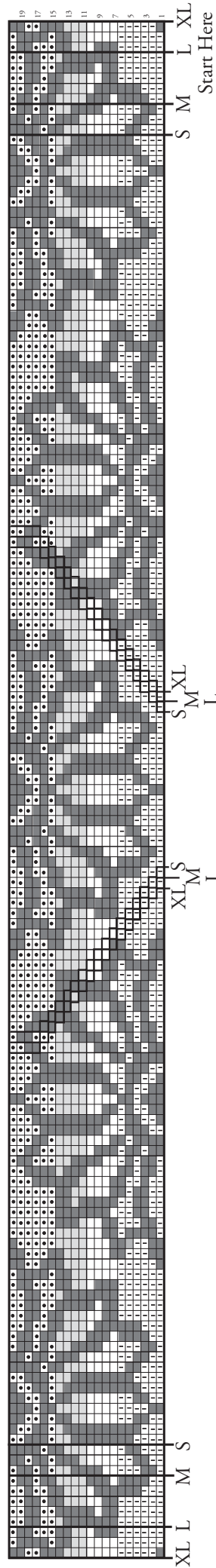
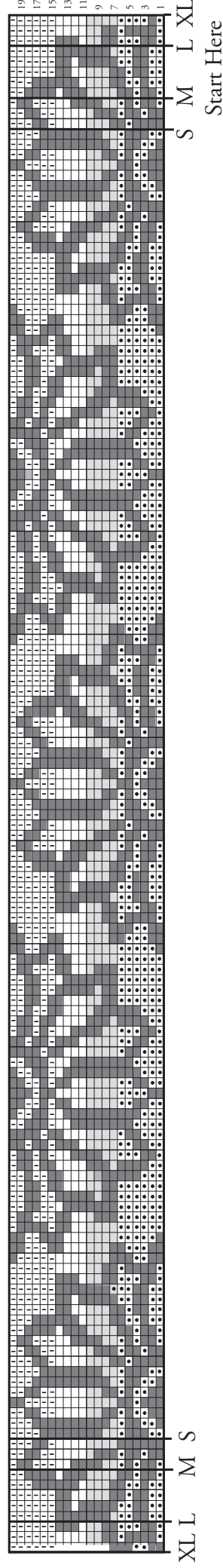


CHART II



- Key
- = MC
 - = Contrast A
 - = Contrast B
 - = Contrast C
 - = Contrast D