

**FANTASTIC FAIR ISLES
(ADULT)**

SIZES

To fit bust measurement

Small	34 ins	[86.5 cm]
Medium	36 ins	[91.5 cm]
Large	38 ins	[96.5 cm]
Extra-Large	40 ins	[101.5 cm]

Finished bust

Small	38 ins	[96.5 cm]
Medium	43 ins	[109 cm]
Large	45 ins	[114.5 cm]
Extra-Large	47 ins	[119.5 cm]

MATERIALS

Patons Astra (50 g/1.75 oz)

Sizes **S M L XL**

Main Color (MC) (Green)
6 7 7 8 **balls**

Contrast A (Burgundy)
2 3 3 3 **balls**

Contrast B (Red)
2 3 3 3 **balls**

Contrast C (White)
1 1 1 1 **ball**

Contrast D (Lt Teal)
1 1 1 1 **ball**

Contrast E (Black)
1 1 1 1 **ball**

Sizes 4 mm (U.S. 6) and 4.5 mm (U.S. 7) knitting needles and size 4.5 mm (U.S. 7) circular knitting needle **or size needed to obtain tension**. 4 st holders.

TENSION

22 sts and 30 rows = 4 ins [10 cm] with smaller needles in stocking st.

INSTRUCTIONS

The instructions are written for smallest size. If changes are necessary for larger sizes the instructions will be written thus ().

Note: Use smaller needles when working MC in stocking st. Use larger needles when working from charts in fair isle pat.

BACK

**With A and smaller needles, cast on 99 (113-119-123) sts.

Purl 2 rows.

Next 2 rows: With MC, knit, inc 6 sts evenly across last row. 105 (119-125-129) sts.

Sizes L and XL only: With MC, beg with a knit row, work 6 rows in stocking st.

All Sizes: Proceed in stripe pat as follows:

1st to 5th rows: With larger needles, work Chart I in stocking st to end of chart, reading knit rows from **right** to left and purl rows from **left** to right and noting 20 st rep will be worked 5 (5-6-6) times.

6th to 12th rows: With smaller needles and MC, beg with a purl row, work in stocking st.

These 12 rows form stripe pat.

Cont in stripe pat until work from beg measures approx 16 (16-17-17) ins [40.5 (40.5-43-43) cm] ending on a 12th row of stripe pat.

Shape raglans: Keeping cont of stripe pat, cast off 3 (4-4-4) sts beg next 2 rows. 99 (111-117-121) sts. Dec 1 st each end of needle on following 7 (9-9-9) rows. 85 (93-99-103) sts.



ABBREVIATIONS: www.patonsyarns.com/glossary



... a part of your life.

P.O. Box 40, Listowel ON N4W 3H3

Size S only: Work 1 row even.
Dec 1 st each end of next row.
83 sts.

All Sizes: Work 1 row even, ending on a 12th row of stripe pat. Work Chart II in stocking st to end of chart, reading knit rows from **right** to left and purl rows from **left** to right and noting dec will be worked at each end of first row, then every following alt row. 47 (57-63-67) sts.**

With MC, cont in stocking st dec 1 st at each end of needle on following alt rows from previous dec until there are 35 (37-39-43) sts.

Next row: Purl.

Leave these sts on a st holder.

FRONT

Work from ** to ** as given for Back.

With MC, cont in stocking st dec 1 st at each end of needle on following alt rows from previous dec until there are 45 (51-53-57) sts.

Purl 1 row.

Shape Neck: Next row: (RS). K2tog. K10 (13-13-13) (neck edge). **Turn.** Leave rem sts on a spare needle.

Dec 1 st at neck edge on next 5 (6-6-6) rows, AT THE SAME TIME, cont dec 1 st at raglan edge on every following alt row from previous dec until there are 2 sts.

Next row: P2tog. Fasten off.
With RS of work facing, slip next 21 (21-23-27) sts onto a st holder. Knit to last 2 sts. Sl1. K1. pssso.

Dec 1 st at neck edge on next 5 (6-6-6) rows, AT THE SAME TIME, cont dec 1 st at raglan edge on every following alt row from previous dec until there are 2 sts.

Next row: P2tog. Fasten off.

SLEEVES

With A and smaller needles cast on 43 (47-51-53) sts.

Purl 2 rows. Break A.

Next 2 rows: With MC, knit, inc 6 sts evenly across last row. 49 (53-57-59) sts.

Sizes M and XL only: With MC, beg with a knit row, work (6-4) rows stocking st.

All Sizes: Proceed in stripe pat as follows:

1st to 5th rows: With larger needles, work Chart III in stocking st to end of chart, reading knit rows from **right** to left and purl rows from **left** to right noting 20 st rep will be worked twice.

6th to 12th rows: With smaller needles and MC, beg with a purl row, work in stocking st.

These 12 rows form stripe pat.

Cont in stripe pat until 10 (10-11-11) reps of stripe pat have been worked, AT THE SAME TIME inc 1 st each end of needle on following 4th rows from previous inc until there are 83 (91-97-99) sts, taking inc sts into stripe pat. All sizes will end on a 12th row of stripe pat.

Shape raglan: Keeping cont of stripe pat, cast off 3 (4-4-4) sts beg next 2 rows. 77 (83-89-91) sts.

Dec 1 st each end of needle on next 9 rows. 59 (65-71-73) sts.

Work 1 row even, ending on a 12th row of stripe pat.

Work Chart IV to end of chart noting a dec will be worked at each end of first row and every following alt row. 23 (29-35-37) sts.

With MC, cont in stocking st dec 1 st each end of needle every following alt row from previous dec until there are 13 (9-11-13) sts.

Size S only: Dec 1 st each end of needle on next 2 rows. 9 sts.

Sizes M, L and XL only: Purl 1 row.

Leave these sts on a st holder.

FINISHING

Pin all garment pieces to measurement. Cover with a damp cloth leaving to dry.

Sew raglan seams leaving left back raglan seam open.

Collar: With RS of work facing, smaller needles and MC, K9 (9-11-13) from left sleeve st holder.

Pick up and knit 9 (12-14-14) sts down Left Front neck edge. K21 (21-23-27) across front st holder. Pick up and knit 9 (12-14-14) sts up Right Front neck edge. K9 (9-11-13) from right sleeve st holder. K35 (37-39-43) across back st holder. 92 (100-112-124) sts.

Work 7 ins [18 cm] in (K2. P2) ribbing. Cast off in ribbing. Place

markers on each side of Collar 4 ins [10 cm] from cast off edge. Sew left back raglan and Collar seam, reversing seam for turn-back at markers. Sew side and sleeve seams.

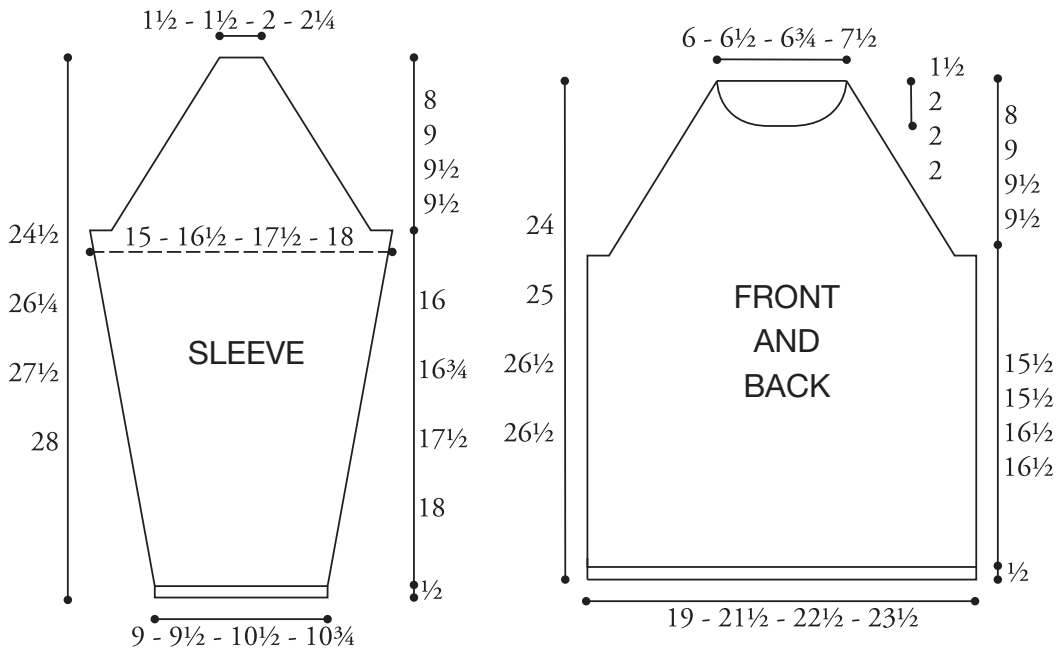
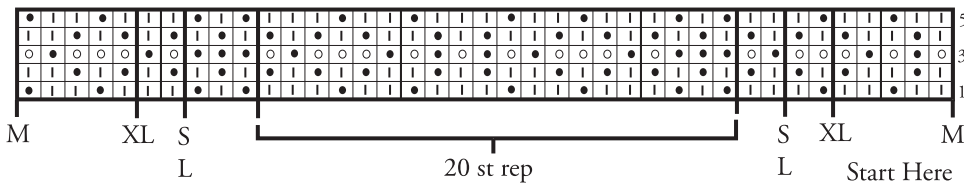


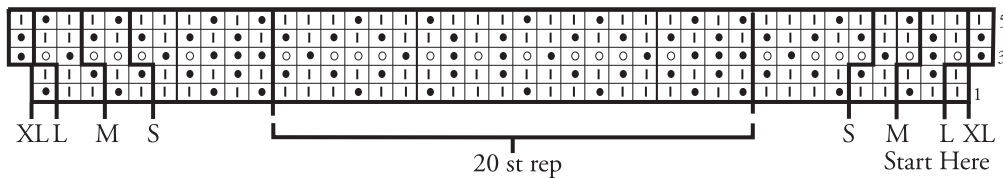
CHART I

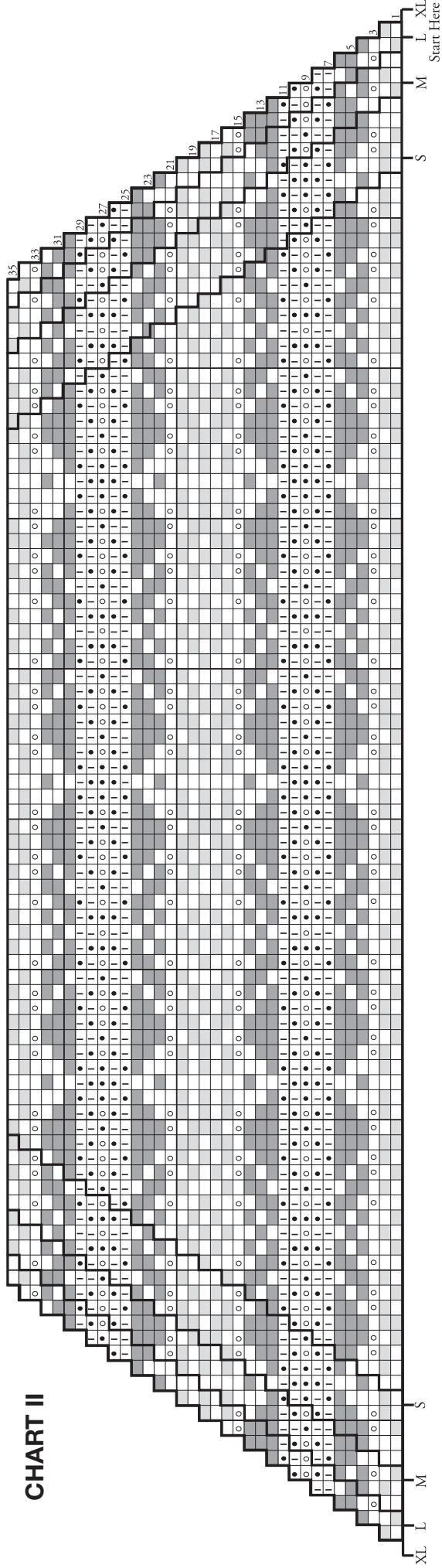


Key

- = Contrast A
- = Contrast B
- = Contrast D

CHART III





Key

- = MC
- = Contrast A
- = Contrast B
- = Contrast C
- = Contrast D
- = Contrast E

