



Snowflake Sweater

BERNAT® SUPER VALUE
BERNAT® BERELLA 4
BERNAT® SATIN

SIZES

To fit bust measurement

Extra-Small/Small

28-34 ins [71-86.5 cm]

Medium

36-38 ins [91.5-96.5 cm]

Large

40-42 ins [101.5-106.5 cm]

Extra-Large

44-46 ins [112-117 cm]

2/3 Extra-Large

48-54 ins [122-137 cm]

4/5 Extra-Large

56-62 ins [142-157.5 cm]

Finished bust

X-Small/Small 37 ins [94 cm]

Medium 41 ins [104 cm]

Large 44½ ins [113 cm]

X-Large 49½ ins [125.5 cm]

2/3 X-Large 58 ins [147.5 cm]

4/5 X-Large 66 ins [167.5 cm]

GAUGE

17 sts and 24 rows = 4 ins [10 cm]
 with larger needles in stocking st.

MATERIALS

Bernat® Super Value

(197 g/7 oz/389 m/426 yds)

or **Bernat® Berella 4**

(100 g/3.5 oz/197 m/216 yds)

or **Bernat® Satin**

(100 g/3.5 oz/149 m/163 yds)

Size XS/S

MC: (Brown) **752 m/820 yds**

A: (Pink) **85 m/95 yds**

Size M

MC: (Brown) **780m/855 yds**

A: (Pink) **90 m/100 yds**

Size L

MC: (Brown) **850m/930 yds**

A: (Pink) **95 m/105 yds**

Size XL

MC: (Brown) **940 m/1030 yds**

A: (Pink) **100 m/110 yds**

Size 2/3XL

MC: (Brown) **960 m/1050 yds**

A: (Pink) **130 m/145 yds**

Size 4/5XL

MC: (Brown) **1040 m/1140 yds**

A: (Pink) **160 m/175 yds**

Sizes 5 mm (U.S. 8) and 5.5 mm (U.S. 9) knitting needles **or size needed to obtain gauge.** 4 st holders.

ABBREVIATIONS

2tog = Work 2 stitches together (K2tog or P2tog).

Alt = Alternate.

Beg = Beginning.

Cont = Continue(ity).

Dec = Decrease(ing).

Inc = Increase 1 stitch by knitting into front and back of next stitch.

K = Knit.

P = Purl.

P2tog = Purl 2 stitches together.

P2togtbl = Purl 2 stitches together through back loop.

Rem = Remaining.

Rep = Repeat.

RS = Right side.

St(s) = Stitch(es).

WS = Wrong side.

INSTRUCTIONS

The instructions are written for smallest size. If changes are necessary for larger sizes the instructions will be written thus (). When only one number is given, it applies to all sizes. For ease in working, circle all numbers pertaining to your size.

Note: When working from chart, carry yarn not in use loosely across WS, but never over more than 5 sts. When it must pass over more than 5 sts, weave it over and under color in use on next st or at center point of sts it passes over. The colors are never twisted around one another.

BACK

With smaller needles and A, cast on 78 (86-94-106-122-142**) sts. Break A.

1st row: (RS). With MC, K2. *P2. K2. Rep from * to end of row.

2nd row: P2. *K2. P2. Rep from * to end of row.

Rep last 2 rows for 1 inch [2.5 cm], ending with a 2nd row and inc 1 (**inc 1-inc 1-dec 1-inc 1-dec 1**) st at center of last row. 79 (**87-95-105-123-141**) sts.

Change to larger needles and proceed in stocking st until work from beg measures 7½ (**7½-7½-8½-9½-10½**) ins [19 (**19-19-21.5-24-26.5**) cm], ending with a purl row.

Work Chart I in stocking st, reading **knit** rows from right to left and **purl** rows from **left** to right.

Cont in Chart I until row 40 of chart has been completed.

Shape raglans: Keeping cont of Chart I, cast off 6 (8-9-11-16-18) sts beg of next 2 rows. 67 (71-77-83-91-105) sts. Cont in chart, noting raglan decs on 3rd and every following 4th row 4 (4-3-4-3-1) time(s) more, then every following alt row 2 (2-4-2-4-8) times. 53 (57-61-69-75-85) sts.**

With MC, cont in stocking st, dec 1 st at each end of needle on every following alt row from previous dec to 31 (31-33-37-37-41) sts, ending with a WS row. Leave rem sts on a st holder.

FRONT

Work from ** to ** as given for Back.

With MC, cont in stocking st, dec 1 st at each end of needle on every following alt row from previous dec to 51 (51-53-59-59-67) sts, ending with a purl row.

Shape neck: 1st row: Work 2tog. K18 (18-18-19-19-19). **Turn.** Leave rem sts on a spare needle.

2nd row: Work 2tog. Purl to end of row.

3rd row: Work 2tog. Knit to last 2 sts. Work 2tog.

4th row: As 2nd row.

5th row: As 3rd row.

6th row: Purl.

Rep last 2 rows 4 times more. 5 (5-5-6-6-6) sts.

Dec 1 st at raglan edge only on next and every following alt row to 2 sts.

Next row: P2tog. Fasten off.

With RS of work facing, slip next 11 (11-13-17-17-25) sts onto a st holder. Join MC to rem sts and knit to last 2 sts. Work 2tog.

2nd row: Purl to last 2 sts. Work 2tog.

3rd row: Work 2tog. Knit to last 2 sts. Work 2tog.

4th row: As 2nd row.

5th row: As 3rd row.

6th row: Purl.

Rep last 2 rows 4 times more. 5 (5-5-6-6-6) sts.

Dec 1 st at raglan edge only on next and every following alt row to 2 sts.

Next row: P2togtbl. Fasten off.

SLEEVES

With smaller needles and A, cast on 42 (42-42-46-46-50) sts. Break A.

1st row: (RS). With MC, K2. *P2. K2. Rep from * to end of row.

2nd row: P2. *K2. P2. Rep from * to end of row.

Rep last 2 rows for 5 ins [12.5 cm], ending with a 2nd row and inc 1 st at center of last row. 43 (43-43-47-47-51) sts.

Change to larger needles and proceed in stocking st, inc 1 st each end of needle on next and every following 10th (6th-6th-6th-4th-2nd) row to 51 (57-57-61-65-61) sts.

Size 4/5XL only: Inc 1 st each end of needle on following 4th row from previous inc to 71 sts.

All sizes: Work 7 (1-1-3-3-3) row(s) even.

Work Chart II in stocking st, reading **knit** rows from right to left, **purl** rows from **left** to right and noting side incs on 3rd (9th-5th-5th-1st-1st) row and every following 12th (10th-6th-6th-4th-4th) row 2 (2-4-4-7-7) times more. 57 (63-67-71-81-87) sts.

Cont in Chart II until row 40 of chart has been completed.

Shape raglans: Keeping cont of Chart II, cast off 6 (8-9-11-16-18) sts beg of next 2 rows. 45 (47-49-49-49-51) sts.

Cont in chart, noting raglan decs on 3rd and every following 4th row 3 (4-4-5-5-5) times more. 37 (37-39-37-37-39) sts.

Sizes XS/S, M and L only: Dec on every following alt row from previous dec 4 (2-2) times. 29 (33-35) sts.

Sizes XL, 2/3XL and 4/5XL only: With MC, cont in stocking st, dec 1 st at each end of needle on every following 4th row from previous dec (2-5-7) times more. (33-27-25) sts.

All sizes: With MC, cont in stocking st, dec 1 st at each end of needle on every following alt row from previous dec to 7 (7-7-9-9-9) sts, ending with a WS row. Leave rem sts on a st holder.

FINISHING

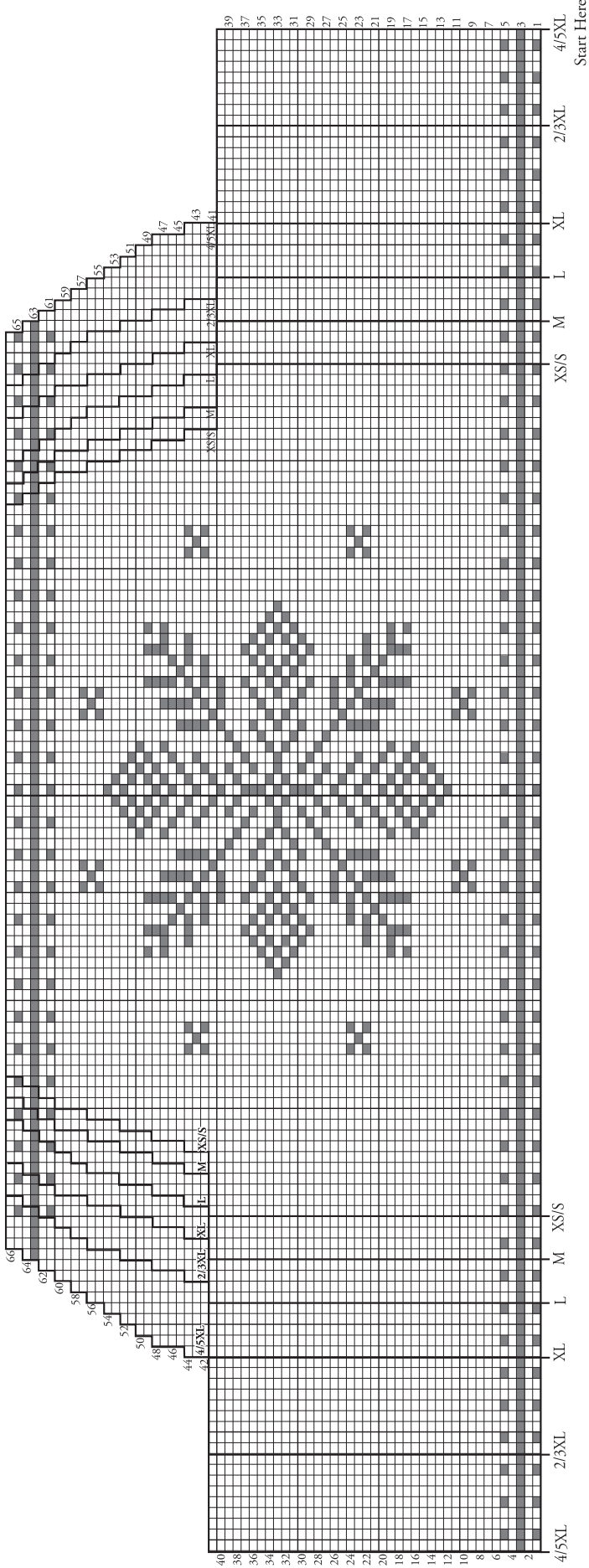
Pin garment pieces to measurements. Cover with a damp cloth, leaving cloth to dry.

Collar: Sew raglan seams, leaving back left raglan open. With RS of work facing, smaller needles and MC, K7 (7-7-9-9-9) from left sleeve st holder. Pick up and knit 15 (15-15-17-17-19) sts down left front neck edge. K11 (11-13-17-17-25) from front st holder. Pick up and knit 15 (15-15-17-17-19) sts up right front neck edge. K7 (7-7-9-9-9) from right sleeve st holder. K31 (31-33-37-37-41) from back st holder. 86 (86-90-106-106-122) sts.

Beg with a 2nd row, work in (K2. P2) ribbing as given for Back for 3 ins [7.5 cm], ending with a WS row. With A, work 1 row. Cast off in ribbing.

Sew left back raglan and collar seam. Sew side and sleeve seams.

CHART I



KEY

■ = MC

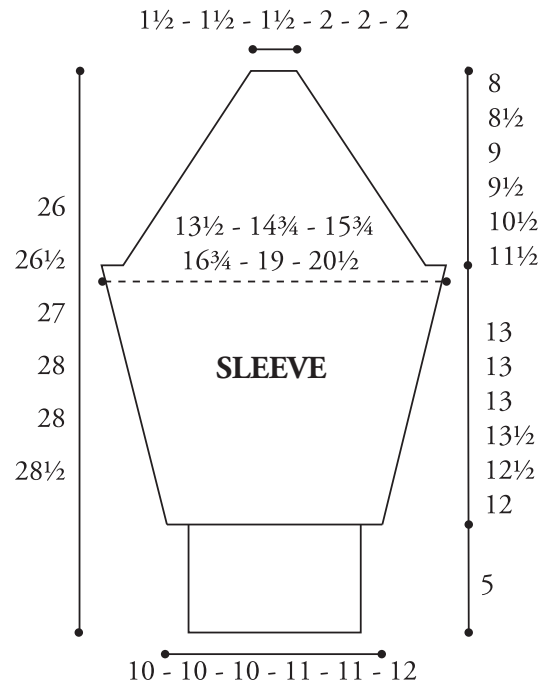
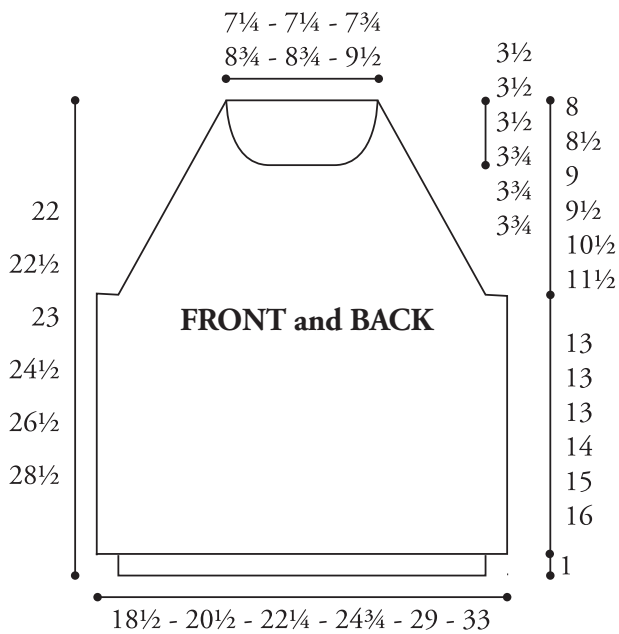
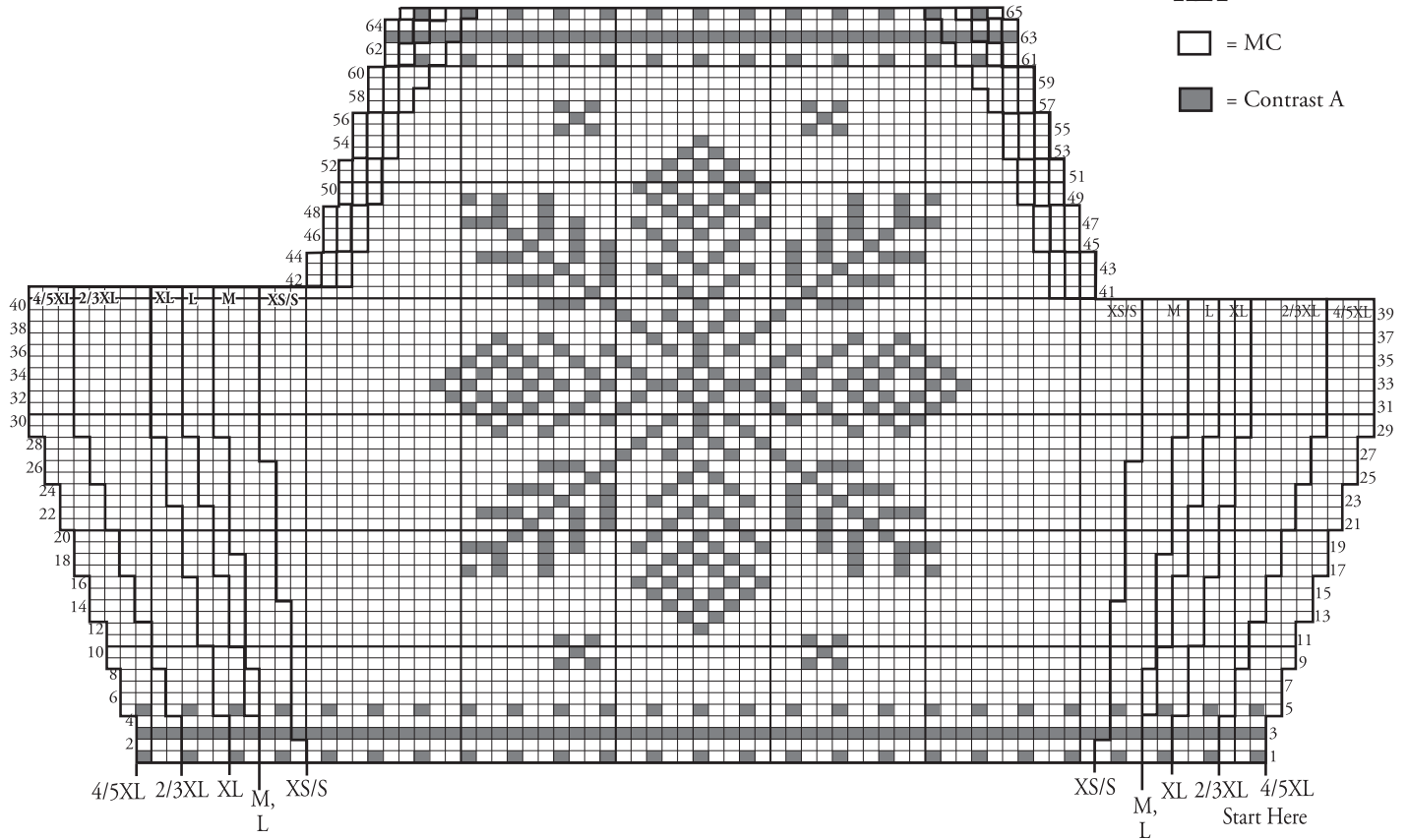
□ = Contrast A

CHART II

KEY

□ = MC

■ = Contrast A



P.O. Box 40, Listowel ON N4W 3H3
 "home style... life style... your style."