

Patons® Classic Wool

AUTUMN WOODS BAG



Front



Back

MEASUREMENTS: Approx 12 ins [30.5 cm] wide x 12 ins [30.5 cm] tall, excluding handles, after felting.

MATERIALS

Patons® Classic Wool (100 g / 3.5 oz):
2 balls of 77236 (Harvest) as **MC**,
1 ball each of 00204 (Old Gold) as **A**
and 00212 (Royal Purple) as **B**.

Size 5 mm (U.S. 8) knitting needles and 5 mm (U.S. 8) circular knitting needle 24 ins [60 cm] long. Set of four size 5 mm (U.S. 8) double pointed knitting needles **or size needed to obtain tension**. 46 ins [117 cm] of webbing 1 inch [2.5 cm] wide for Straps. 45 ins [114.5 cm] of cord for drawstring.

TENSION

19 sts and 25 rows = 4 ins [10 cm] in stocking st.

INSTRUCTIONS

MAIN SECTION

Felting Note: To keep Fair Isle area of Bag from shrinking too much when felted, when working from Chart, carry color not in use loosely across WS, **but never over more than 2 sts**. When it must pass over more than 2 sts, **twist it around** color in use every 2 sts or at center point of sts it passes over. With B and circular needle, cast on 144 sts. Join in rnd, placing marker on first st to mark beg of rnd.

1st rnd: Purl.

2nd rnd: Knit.

Rep last 2 rnds once more.

Next 2 rnds: Knit.

Next rnd: (Eyelet rnd). K7. yfwd. K2tog. (K12. yfwd. K2tog) 4 times. K14. K2tog. (K12. yfwd. K2tog) 4 times. K7.

Next 2 rnds: Knit. Break B.

Next 2 rnds: With MC, knit.

Work in Chart to end of chart, reading rnds from **right** to left and noting 24-st rep will be worked 6 times. Break A.

With MC, knit 4 rnds. Break MC.

Important to know before felting:

- It is important to record all the measurements and changes before and after felting. You will be able to either adjust or repeat the method to produce reliable and consistent results.
- Always test a sample. Different colored yarns may felt differently. Some colors have to undergo the felting more than once in order to achieve the desired result.

- As yarn will be going into very hot water, color-fastness can be affected. Testing a sample will give you an indication of how the color will be affected in very hot water.
- Any knitting or crocheting that has been properly felted will have a distinct texture. The knitted or crocheted piece becomes very dense and matted. This will be one of the key criteria for determining that felting has occurred.

HOW TO FELT

- Put pieces in top-loading washing machine. Put in a pair of jeans or large towel (in non-interfering color) for extra agitation. Using low water level, run a Hot/Cold cycle for 15 min.
- Add 2 tablespoons of baking soda for a small load. After one cycle, check for size. Repeat as necessary.
- Run through the rinse and dry spin cycle.

- Lay felted piece on a dry towel, away from direct heat or sunlight.
- Shape piece to correct measurements.
- Allow to dry thoroughly. Do not use a clothes dryer. If an edge ripples, baste a thread through the edge and gather in. Remove the thread after felted item is dry.
- When piece is dry, use tailor's chalk to mark cutting (trimming) edges.

Shape base: 1st rnd: With B, K18. (K10. K2tog) 3 times. K36. (K10. K2tog) 3 times. K18. 138 sts.

2nd and alt rnds: Knit.

3rd rnd: K18. (K9. K2tog) 3 times. K36. (K9. K2tog) 3 times. K18.

5th rnd: K18. (K8. K2tog) 3 times. K36. (K8. K2tog) 3 times. K18.

7th rnd: K18. (K7. K2tog) 3 times. K36. (K7. K2tog) 3 times. K18. 120 sts.

8th rnd: Knit.

Dec 6 sts on next and every following alt rnd, as before, until there are 84 sts, changing to double pointed needles when necessary.

Next rnd: Knit.

Next rnd: K18. (K2tog) 3 times. K36. (K2tog) 3 times. K18. 78 sts.

Close base: Cast off. Align cast off sts to form center of base. Sew cast off sts tog using flat seam.

FLAP

With pair of needles and B, cast on 15 sts.

1st row: K2. M1. Knit to last 2 sts. M1. K2. 17 sts.

2nd row: Purl.

Rep last 2 rows to 45 sts. Place marker at each end of last row.

Cont even in stocking st until work from beg measures 12 ins [30.5 cm], ending with RS facing for next row. Cast off.

Edging: With RS of Flap facing, circular needle and MC, pick up and knit 33 sts down side of Flap from cast off edge to marker, 23 sts from marker to cast on edge, 15 sts across cast on edge, 23 sts from cast on edge to second marker, and 33 sts up other side of Flap to cast off edge. 127 sts. Knit 2 rows. Cast off knitwise (WS).

FINISHING

Felting Tip: Before felting, weave a shoelace through eyelets and tie ends together. The shoelace will keep the eyelets open during the felting process.

Felt pieces following How to Felt instructions.

Shape Flap to measure approx 7½ ins [19 cm] wide by 9 ins long. Flatten base of Main Section so Backpack will stand. Locate eyelets at top edge of Main Section and enlarge with double pointed needle. Dry pieces away from heat and direct sunlight.

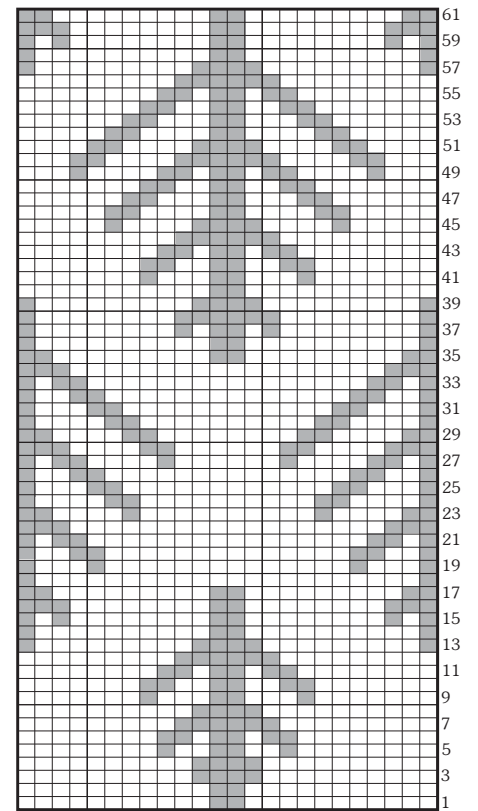
Cut webbing into 2 pieces each 23 ins [58.5 cm] long for Straps.

Place markers on top and bottom edges of Main Section at center back. Sew one end of each Strap to Main section on either side of marker below eyelet row. Sew unshaped edge of Flap to Main Section

below eyelet row, having Flap centered and covering ends of Straps. Sew opposite ends of Straps to bottom edge of Main Section 4 ins from marker.

Beg and ending at center front, weave Cord through eyelets. Adjust length if desired and knot ends to secure.

Chart



Start
Here

Key □ = Main Color (MC)
■ = Contrast A



ABBREVIATIONS: www.patonsyarns.com/glossary

Patons®
... a part of your life.

P.O. Box 40, Listowel ON N4W 3H3