



**Patons**  
DECOR

**Patons**  
Canadiana

## BLANKET AND PILLOW

### MEASUREMENTS

**Afghan:** Approx 47 x 62 ins [119.5 x 157.5 cm].

**Pillow:** 18 ins [45.5 cm] square.

### MATERIALS

**Patons Canadiana** (100 g/3.5 oz) or  
**Patons Décor** (100 g/3.5 oz)

### Afghan and Pillow

Main Color (MC) (Teal)	6	balls
Contrast A (Blue)	5	balls
Contrast B (White)	4	balls
Contrast C (Yellow)	1	ball
Contrast D (Red)	1	ball
Contrast E (Orange)	1	ball
Contrast F (Dk Blue)	1	ball
Contrast G (Dk Teal)	1	ball
Contrast H (Aqua)	1	ball
Contrast I (Black)	1	ball

Size 4.5 mm (U.S. 7) knitting needles  
**or size needed to obtain tension.** 18  
ins [45.5 cm] square pillow form.

### TENSION

20 sts and 26 rows = 4 ins [10 cm] in  
stocking st.

### ABBREVIATIONS

**KW3** = Knit next st, wrapping yarn  
3 times.

### INSTRUCTIONS

**Note:** When working with more than  
1 color within a row, use separate balls  
for each area of color. To change color,  
twist the two colors around each other  
where they meet, on WS, to avoid a  
hole.

When working in Fair Isle technique,  
carry yarn not in use loosely across WS  
of work but never over more than 5 sts.  
When it must pass over more than 5 sts,  
weave it over and under color in use on  
next st or at center point of sts it passes  
over. The colors are never twisted  
around one another.

For Chart I embroider using duplicate  
st with B, D and I.

For Chart II embroider using duplicate  
st with E and B.

For Chart III embroider using duplicate  
st with D, I and G.

For Chart IV embroider using duplicate  
st with C, D, E, F, and H.

### BLANKET

#### Strip A (make 1)

\*\*\*With A, cast on 31 sts.

Work 2 rows stocking st.

**Next row:** (RS). With A, K4. Work 1st  
row of Chart I reading row from **right**  
to left. With A, K4.

**Next row:** With A, P4. Work 2nd row  
of Chart I reading row from **left** to  
right. With A, P4.

Chart I is now in position. Work Chart I  
to end of chart, ending with RS facing  
for next row.

Work 6 rows stocking st, dec 2 sts  
evenly across last row. 29 sts.

**Next row:** K1. \*P1. K1. Rep from \* to  
end of row.

Last row forms seed st pat.



ABBREVIATIONS: [www.patonsyarns.com/glossary](http://www.patonsyarns.com/glossary)

Rep last row 5 times more, inc 4 sts evenly across last row. 33 sts.

Proceed in check pat as follows:

**1st row:** With A, knit.

**2nd row:** K4. (KW3. K5) 4 times. KW3. K4.

**3rd row:** With B, K4. [Sl1 (dropping extra loops). K5] 4 times. Sl1 (dropping extra loops). K4.

**4th row:** P4. (Sl1. P5) 4 times. Sl1. P4.

**5th row:** K4. (Sl1. K5) 4 times. Sl1. K4.

**6th to 8th rows:** Rep 4th and 5th rows once more, then 4th once.

These 8 rows form check pat.

Work a further 32 rows in check pat.

**Next 2 rows:** With A, knit, dec 4 sts evenly across last row. 29 sts.

Proceed in seed st pat for 6 rows, inc 2 sts evenly across last row. 31 sts. Break A.

With MC, work 6 rows stocking st, ending with RS facing for next row.

**Next row:** K6. Work 1st row of Chart V, reading row from **right** to left. K6.

**Next row:** P6. Work 2nd row of Chart V, reading row from **left** to right. P6.

Chart V is now in position.

Work Chart V to end of chart.\*\*\*

Work 6 rows in stocking st, dec 2 sts evenly across last row. 29 sts.

Proceed in seed st pat for 6 rows, inc 2 sts evenly across last row. 31 sts.

Proceed in ridge pat as follows:

\*\*With B, work 2 rows stocking st.

**Next 2 rows:** With MC, knit.

With B, work 6 rows in stocking st.

Last 8 rows form ridge pat.

Work a further 24 rows ridge pat.

**Next 2 rows:** With MC, knit.

With B, work 2 rows in stocking st, dec 2 sts evenly across last row, and ending with RS facing for next row. 29 sts.\*\*

With MC, proceed in seed st pat for 6 rows, inc 2 sts evenly across last row. 31 sts. Break MC.

With A, work 6 rows stocking st, ending with RS facing for next row.

**Next row:** With A, K7. Work 1st row of Chart II reading row from **right** to left. With A, K7.

**Next row:** With A, P7. Work 2nd row of Chart II reading row from **left** to right. With A, P7.

Chart II is now in position.

Work Chart II to end of chart, ending with RS facing for next row.

Work 6 rows in stocking st, dec 2 sts evenly across last row. 29 sts.

Proceed in seed st pat for 6 rows, inc 4 sts evenly across last row. 33 sts.

Proceed in check pat for 40 rows.

**Next 2 rows:** With A, knit, dec 4 sts evenly across last row. 29 sts.

Proceed in seed st pat for 6 rows, inc 2 sts evenly across last row. 31 sts. Break A.

With MC, work 6 rows in stocking st.

**Next row:** (RS). K7. Work 1st row of Chart VI, reading row from **right** to left. K7.

**Next row:** P7. Work 2nd row of Chart VI, reading row from **left** to right. P7.

Chart VI is now in position.

Work Chart VI to end of chart.

Work 6 rows in stocking st, dec 2 sts evenly across last row. 29 sts.

Proceed in seed st pat for 6 rows, inc 2 sts evenly across last row. 31 sts.

Rep from \*\* to \*\* as given above.

Proceed in seed st pat for 6 rows, inc 2 sts evenly across last row. 31 sts. Break MC.

With A, work 4 rows in stocking st.

**Next row:** (RS). With A, K4. Work 1st row of Chart III reading row from **right** to left. With A, K4.

**Next row:** With A, P4. Work 2nd row of Chart III reading row from **left** to right. With A, P4.

Chart III is now in position.

Work Chart III to end of chart, ending with RS facing for next row.

Work 6 rows in stocking st, ending with RS facing for next row. Cast off.

**Strip B** (make 3)

With A, cast on 33 sts.

Proceed in check pat for 40 rows.

**Next 2 rows:** With A, knit, dec 4 sts evenly across last row. 29 sts. Break A.

**Next row:** With MC, knit.

Proceed in seed st pat for 5 rows, inc 2 sts evenly across last row and ending with RS facing for next row. 31 sts.

Work 6 rows in stocking st.

**Next row:** (RS). K8. Work 1st row of Chart VIII, reading row from **right** to left. K8.

**Next row:** P8. Work 2nd row of Chart VIII, reading row from **left** to right. P8.

Chart VIII is now in position.

Work Chart VIII to end of chart.

Work 6 rows in stocking st, dec 2 sts evenly across last row. 29 sts.

Proceed in seed st pat for 6 rows, inc 2 sts evenly across last row. 31 sts.

Rep from \*\* to \*\* as given for Strip A. Break MC.

**Next row:** With A, knit. Proceed in seed st pat for 5 rows, inc 2 sts evenly across last row and ending with RS facing for next row. 31 sts.

Work 2 rows in stocking st.

**Next row:** (RS). With A, K8. Work 1st row of Chart IV reading row from **right** to left. With A, K8.

**Next row:** With A, P8. Work 2nd row of Chart IV reading row from **left** to right. With A, P8.

Chart IV is now in position.

Work Chart IV until row 5 of Chart IV is complete, ending with WS facing for next row. (Remainder of Chart IV design is worked in duplicate st).

Work 26 rows in stocking st, ending with WS facing for next row.

**Next row:** Purl, dec 2 sts evenly across. 29 sts.

Proceed in seed st pat for 6 rows, inc 4 sts evenly across last row. 33 sts.

Proceed in check pat for 40 rows.

**Next 2 rows:** With A, knit, dec 4 sts evenly across last row. 29 sts. Break A.

**Next row:** With MC, knit.

Proceed in seed st pat for 5 rows, inc 2 sts evenly across last row. 31 sts.

With MC, work 6 rows in stocking st.

**Next row:** (RS). K8. Work 1st row of Chart VII, reading row from **right** to left. K9.

**Next row:** P9. Work 2nd row of Chart VII reading row from **left** to right. P8. Chart VII is now in position.

Work Chart VII to end of chart.

Work 6 rows in stocking st, dec 2 sts evenly across last row. 29 sts.

Proceed in seed st pat for 6 rows, inc 2 sts evenly across last row. 31 sts.

Rep from \*\* to \*\* as given for Strip A. Break MC.

**Next row:** With A, knit.

Proceed in seed st pat for 5 rows, inc 2 sts evenly across last row. 31 sts.

Work 2 rows in stocking st, ending with RS facing for next row.

**Next row:** With A, K4. Work 1st row of Chart I. With A, K4.

**Next row:** With A, P4. Work 2nd row of Chart I. With A, P4.

Chart I is now in position.

Work Chart I to end of chart, ending with RS facing for next row.

Work 6 rows stocking st, dec 2 sts evenly across last row. 29 sts.

Proceed in seed st pat for 6 rows, inc 4 sts evenly across last row and ending with RS facing for next row. 33 sts.

Proceed in check pat for 40 rows.

**Next row:** With A, knit. Cast off knitwise (WS).

### **Strip C** (make 2)

With A, cast on 31 sts.

Work 6 rows stocking st.

**Next row:** (RS). With A, K7. Work 1st row of Chart II. With A, K7.

**Next row:** With A, P7. Work 2nd row of Chart II. With A, P7.

Chart II is now in position.

Work Chart II to end of chart, ending with RS facing for next row.

Work 6 rows stocking st, dec 2 sts evenly across last row. 29 sts.

Proceed in seed st pat for 6 rows, inc 4 sts evenly across last row and ending with RS facing for next row. 33 sts.

Proceed in check pat for 40 rows.

**Next 2 rows:** With A, knit, dec 4 sts evenly across last row. 29 sts.

Proceed in seed st pat for 6 rows, inc 2 sts evenly across last row and ending with RS facing for next row. 31 sts. Break A.

With MC, work 6 rows in stocking st.

**Next row:** (RS). K8. Work 1st row of Chart VII. K9.

**Next row:** P9. Work 2nd row of Chart VII. P8.

Chart VII is now in position.

Work Chart VII to end of chart.

Work 6 rows in stocking st, dec 2 sts evenly across last row. 29 sts.

Proceed in seed st pat for 6 rows, inc 2 sts evenly across last row. 31 sts.

Rep from \*\* to \*\* as given for Strip A. Proceed in seed st pat for 6 rows, inc 2 sts evenly across last row. 31 sts. Break MC.

With A, work 4 rows in stocking st.

**Next row:** (RS). With A, K4. Work 1st row of Chart III. With A, K4.

**Next row:** With A, P4. Work 2nd row of Chart III. With A, P4.

Chart III is now in position.

Work Chart III to end of chart.

Work 6 rows in stocking st, dec 2 sts evenly across last row. 29 sts.

Proceed in seed st pat for 6 rows, inc 4 sts across last row. 33 sts.

Proceed in check pat for 40 rows.

**Next 2 rows:** With A, knit, dec 4 sts evenly across last row. 29 sts.

Proceed in seed st pat for 6 rows, inc 2 sts evenly across last row. 31 sts. Break A.

With MC, work 6 rows in stocking st.

**Next row:** (RS). K8. Work 1st row of Chart VIII. K8.

**Next row:** P8. Work 2nd row of Chart VIII. P8.

Chart VIII is now in position.

Work Chart VIII to end of chart.

Work next 6 rows in stocking st, dec 2 sts evenly across last row. 29 sts.

Proceed in seed st pat for 6 rows, inc 2 sts evenly across last row. 31 sts.

Rep from \*\* to \*\* as given for Strip A.

Proceed in seed st pat for 6 rows, inc 2 sts evenly across last row. 31 sts. Break MC.

Work 2 rows in stocking st.

**Next row:** (RS). With A, K8. Work 1st row of Chart IV. With A, K8.

**Next row:** With A, P8. Work 2nd row of Chart IV. With A, P8.

Chart IV is now in position. Work Chart IV until row 5 of Chart IV is complete, ending with WS facing for next row.

Work 27 rows in stocking st, ending with RS facing for next row. Cast off.

**Seed St Strip** (With MC, make 3. With A, make 4)

Cast on 5 sts.

Proceed in seed st pat until work from beg, when slightly stretched, measures same length as any Strip.

## FINISHING

Sew strips tog as shown in Diagram I using flat seam.

**Bottom Edging:** With RS of work facing and MC, pick up and knit 197 sts along bottom edge of Afghan.

Proceed in seed st pat for 6 rows. Cast off in pat.

**Top Edging:** With RS of work facing and A, pick up and knit 197 sts along top edge of Afghan. Proceed in seed st pat for 6 rows. Cast off in pat.

## PILLOW

### Front

**Strip I** (make 1)

Rep from \*\*\* to \*\*\* as given for Strip A of Blanket.

Work next 6 rows in stocking st, ending with RS facing for next row. Cast off.

**Strip II** (make 1)

With B, cast on 31 sts.

Rep from \*\* to \*\* as given for Strip A.

Proceed in seed st pat for 6 rows, inc 2 sts evenly across last row. 31 sts. Break MC.

With A, work 6 rows in stocking st.

**Next row:** (RS). With A, K7. Work 1st row of Chart II reading row from **right** to left. With A, K7.

**Next row:** With A, P7. Work 2nd row of Chart II reading row from **left** to right. With A, P7.

Chart II is now in position.

Work Chart II to end of chart, ending with RS facing for next row.

Work 6 rows in stocking st, dec 2 sts evenly across last row. 29 sts.

Proceed in seed st pat for 6 rows, inc 4 sts evenly across last row. 33 sts.

Proceed in check pat for 40 rows as given for Strip A of Blanket.

**Next row:** With A, knit, dec 2 sts evenly across. 31 sts. Cast off knitwise (WS).

**Strip III** (make 1)

With MC, cast on 31 sts.

Work 6 rows in stocking st.

**Next row:** (RS). K7. Work 1st row of Chart VI, reading row from **right** to left. K7.

**Next row:** P7. Work 2nd row of Chart VI, reading row from **left** to right. P7.

Chart VI is now in position.

Work Chart VI to end of chart.

Work 6 rows in stocking st, dec 2 sts evenly across last row. 29 sts.

Proceed in seed st pat for 6 rows, inc 2 sts evenly across last row. 31 sts.

Rep from \*\* to \*\* as given for Strip A of Blanket.

Proceed in seed st pat for 6 rows, inc 2 sts evenly across last row. 31 sts. Break MC.

With A, work 4 rows in stocking st.

**Next row:** (RS). With A, K4. Work 1st row of Chart III reading row from **right** to left. With A, K4.

**Next row:** With A, P4. Work 2nd row of Chart III reading row from **left** to right. With A, P4.

Chart III is now in position.

Work Chart III to end of chart, ending with RS facing for next row.

Work 6 rows in stocking st. Cast off.

**Seed St Strip:** (With MC, make 1. With A, make 1)

Work as given for Blanket measuring same length as any Strip for Pillow.

Sew strips using flat seam in the following sequence: Strip I, Seed St Strip in MC, Strip II, Seed St Strip in A, Strip III.

**Top Edging:** With RS of work facing and MC, pick up and knit 91 sts along top edge of Pillow.

Proceed in seed st pat for 6 rows. Cast off in pat.

**Bottom Edging:** With RS of work facing and A, pick up and knit 91 sts along bottom edge of Pillow.

Proceed in seed st pat for 6 rows. Cast off in pat.

## Back

With MC, cast on 91 sts.

Proceed in seed st pat for 6 rows, inc 6 sts evenly across last row. 97 sts. Break MC.

With A, proceed in stocking st for 114 rows, dec 6 sts evenly across last row. 91 sts

Proceed in seed st pat for 6 rows. Cast off in pat.

Sew Front and Back tog leaving one side open to insert pillow form. Insert pillow form. Sew opening closed.

## Key

☐ = Contrast A

■ = Contrast B

☑ = Contrast C

● = Contrast D

☒ = Contrast E

↘ = Contrast F

△ = Contrast G

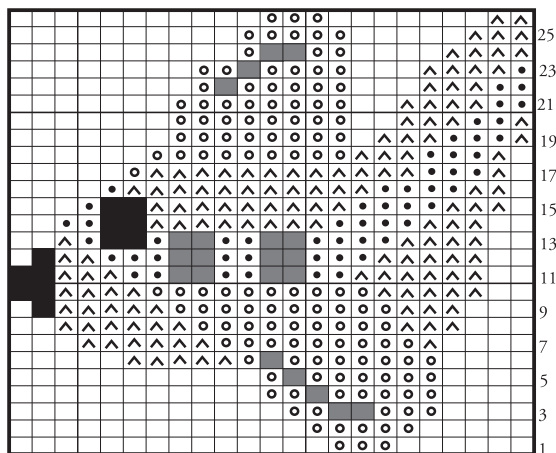
○ = Contrast H

■ = Contrast I

▬ = With Contrast B, knit on right side, purl on wrong side.

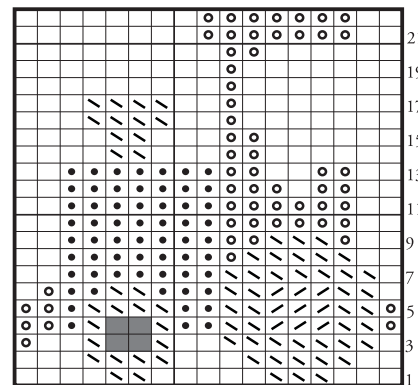
▬ = With Contrast B, purl on right side, knit on wrong side.

### CHART I



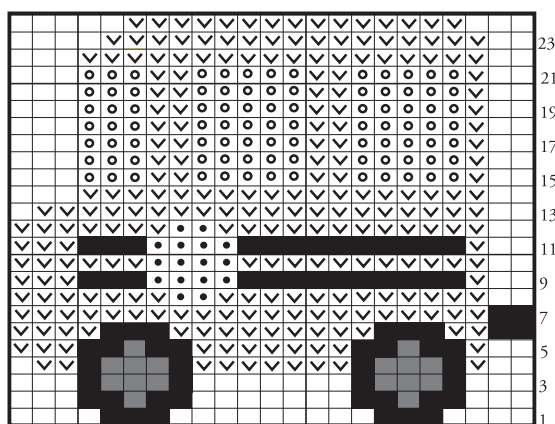
Start Here

### CHART II



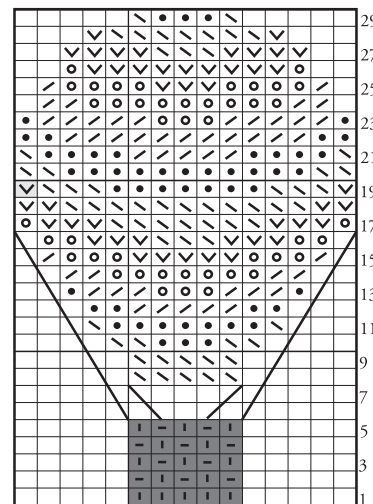
Start Here

### CHART III



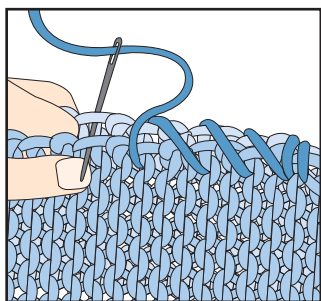
Start Here

### CHART IV

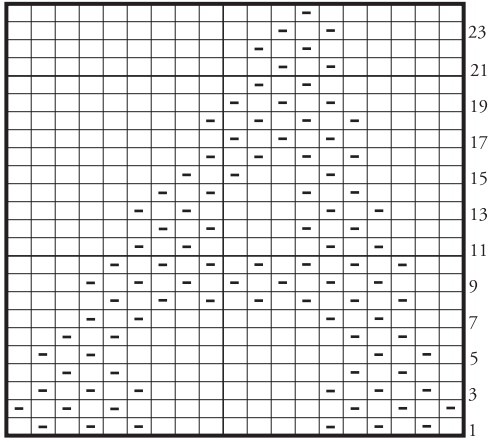


Start Here

## FLAT SEAM

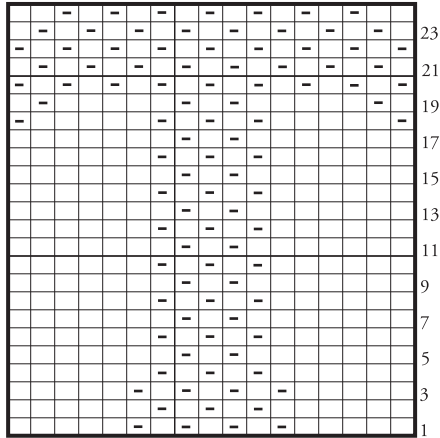


**CHART V**



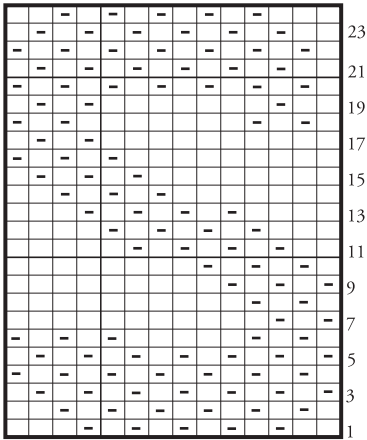
Start Here

**CHART VI**



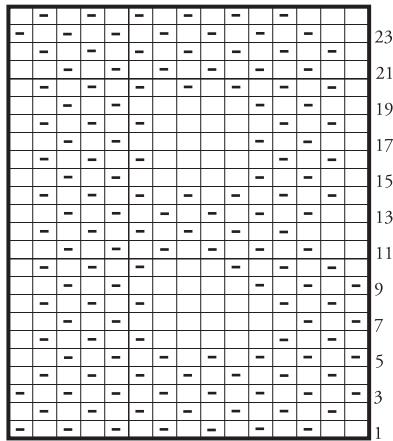
Start Here

**CHART VII**



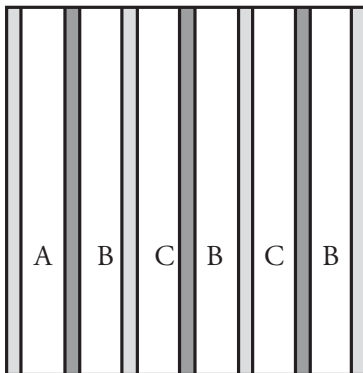
Start Here

**CHART VIII**





Start Here



**DIAGRAM I**



**Key for Diagram I**

-  = Seed st with A
-  = Seed st with B

**Key for Letters**

-  = With MC, knit on right side, purl on wrong side.
-  = With MC, purl on right side, knit on wrong side.



... a part of your life.

P.O. Box 40, Listowel ON N4W 3H3